



Caton Farm - Bruce Road ■ Phase I Study

Fairmont Community Stakeholder Involvement Group Meeting #1

October 12, 2021



Introductions



Meeting Ground Rules

- Please silence all phones.
- Everyone will be heard. If you have any questions, please reserve all questions and comments until the end of the presentation.
- Only one person at a time should speak. Every thought shared tonight is valuable and we want to ensure everyone is given the opportunity to speak.
- Comments will be given the appropriate time but please be mindful of others who also would like to speak as well. (No more than 2 minutes please)
- During presentation, please take notes to ask questions at the end of the presentation.
- Respectful...we can agree to disagree and yet remain respectful.

Thank everyone for coming out tonight.



Purposes of Meeting

- I. Engage the Fairmont Community
- II. Describe Stakeholder Involvement Process
- III. Discuss the project background
- IV. Discuss current status of the project
- V. Discuss Fairmont Community Questionnaire
- VI. Discuss Next Steps



Engage the Fairmont Community

- Community is directly affected by project
- Want to understand concerns
- Formulate mitigation measures



Stakeholder Involvement Process

- Fairmont Community Focused
 - Project Study Group (PSG)
 - Stakeholder Involvement Group
- Actions to Engage the Community
 - Questionnaire
 - Stakeholder Involvement Group (SIG) Meeting #1
 - Fairmont Community Public Information Meeting
 - Stakeholder Involvement Group (SIG) Meeting #2


The image shows a screenshot of a community impact questionnaire. At the top right is the CFB logo with the text 'Caton Farm - Bruce Road Phase I Study'. The title of the form is 'Caton Farm - Bruce Road Corridor Study Community Impact Questionnaire'. Below the title is an introductory paragraph explaining that the questionnaire is part of a public outreach process to help the Will County Division of Transportation understand community needs and concerns. It mentions that input will help identify the most important topics to be addressed in the Fairmont Community. It also provides contact information for Christina Kupkowski at (815) 727-9476 or ckupkowski@willcountymt.com. It states that additional questionnaire forms will be available upon request and that the form can be completed electronically at www.cfb-study.com/community-outreach. A green megaphone icon is next to the introductory text. Below this is a section titled 'Your Voice in the Community' with a sub-header 'Community input is an important part of understanding community concerns and creating a plan to address issues in your community. Please provide answers to the following questions to help aid in this process.' The first question is '1. Please provide your name and contact information below. Though we strongly urge you to share your contact information so we may better understand your specific concerns and needs, if you wish to remain anonymous, you may submit this form with the contact information blank.' It includes fields for Name, Address, Telephone, and Email. The second question is '2. What is your preferred method of communication should we need to get in contact with you? (Select One)' with options: Phone, Text Message, Regular Mail, E-Mail, and Please Do Not Contact Me. There is also a field for 'Other (Specify):'. The third question is '3. What is the most convenient time for the project team to reach you? (Select All that Apply)' with options: Morning, Afternoon, Evening, Weekday, and Weekend. There is also a field for 'Other (Specify):'. At the bottom left is the website 'www.cfb-study.com' and at the bottom right is the 'WILL COUNTY DOT' logo.

Ground Rules for SIG Members

- All input from all participants in the process is valued and considered.
- All participants must come to the process with an open mind and participate openly and honestly.
- All participants in the process must treat each other with respect and dignity.
- The project must progress at a reasonable pace, based on the project schedule.



Ground Rules for SIG Members (cont.)


- Summaries of individual stakeholder meetings and SIG meetings will be maintained by WCDOT and posted on the project website.
 - Individual SIG members may be replaced on the SIG membership if they are deemed unable to fulfill the duties of a member or not following the ground rules.
 - All participants should work collaboratively and cooperatively to seek understanding of the project.
 - WCDOT's overall goal is to develop an improvement plan that incorporates the community's goals.
- 

SIG Member Responsibilities

- Committing to attending all scheduled SIG meetings to the extent possible, and participating in discussions and activities.
- Participating openly and honestly, while respecting the opinions of group members.
- Representing their organizations and the community's interests and sharing this information with the PSG so that the PSG can more clearly understand the broader community. In this way, the SIG will function as a liaison between the PSG and the public.
- Keeping the broader community up to date on the progress of the study based on detailed information provided by the PSG.
- Working to achieve a general project understanding among all interested parties and the public.



Project Background

- Several agencies over the past 50 years have evaluated the need for another river crossing in the area
 - 1960s/1990 Fox Valley Freeway Study by IDOT
 - Will County Long Range Highway Plan for 1984
 - 1991 Lockport Township Bridge Feasibility Study
 - 1990s IDOT SRA Study
 - Additional studies were completed during the 50 years as well to address traffic resulting from further development in the area
 - Finally, in 2000, the Caton Farm – Bruce Road Study was initiated
- 

Project Purpose

The purpose of the Proposed Action is to provide a transportation system improvement that will address capacity, operational, and safety deficiencies; and satisfy projected travel demands within a regional corridor extending between Caton Farm Road at U.S. Route 30 and IL Route 7 (159th Street) at Cedar Road.



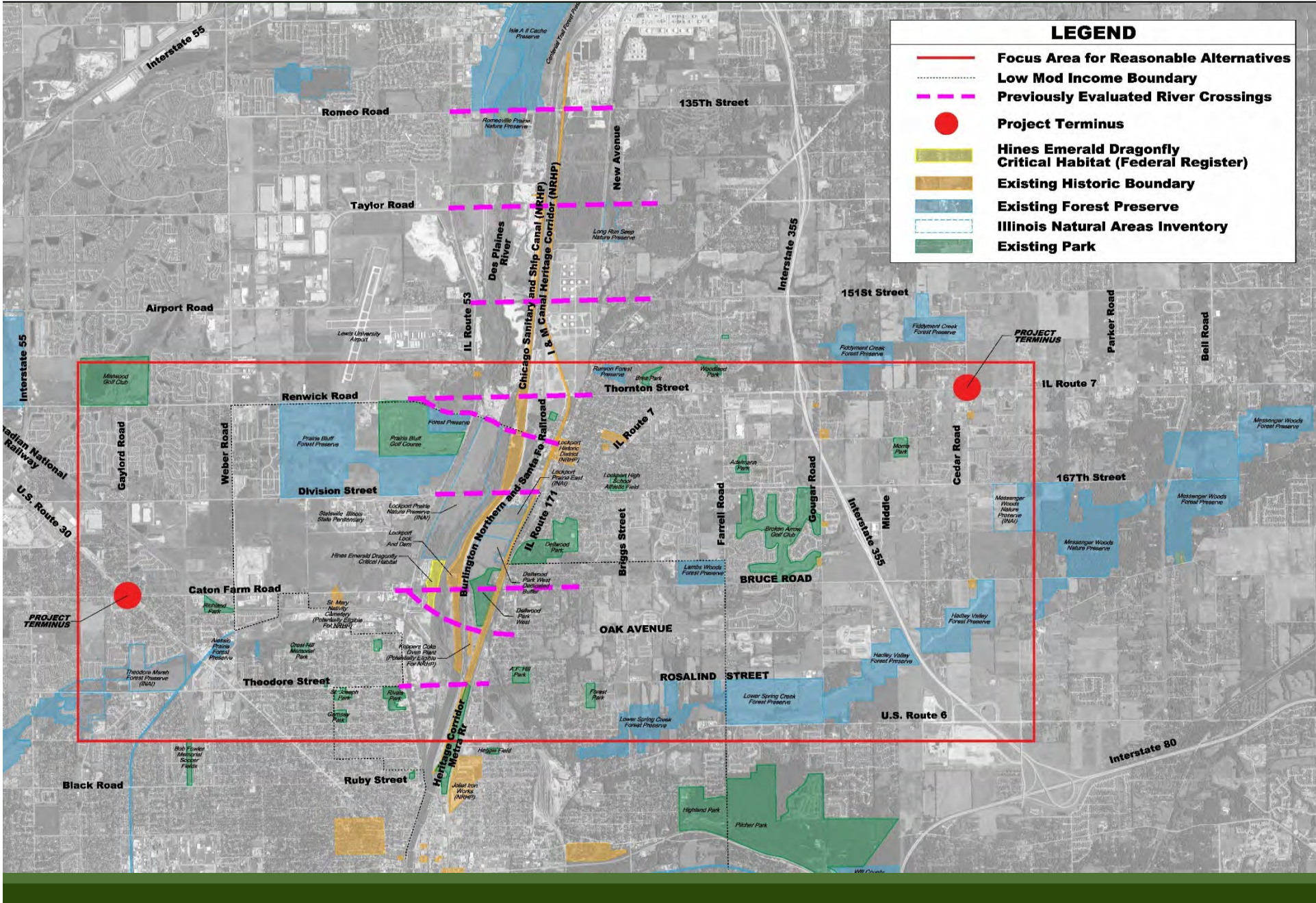
Project Needs

- Accommodate population and employment growth
- Improve roadway system linkage
- Accommodate projected transportation demand
- Provide for multi-modal facilities
- Increase travel safety

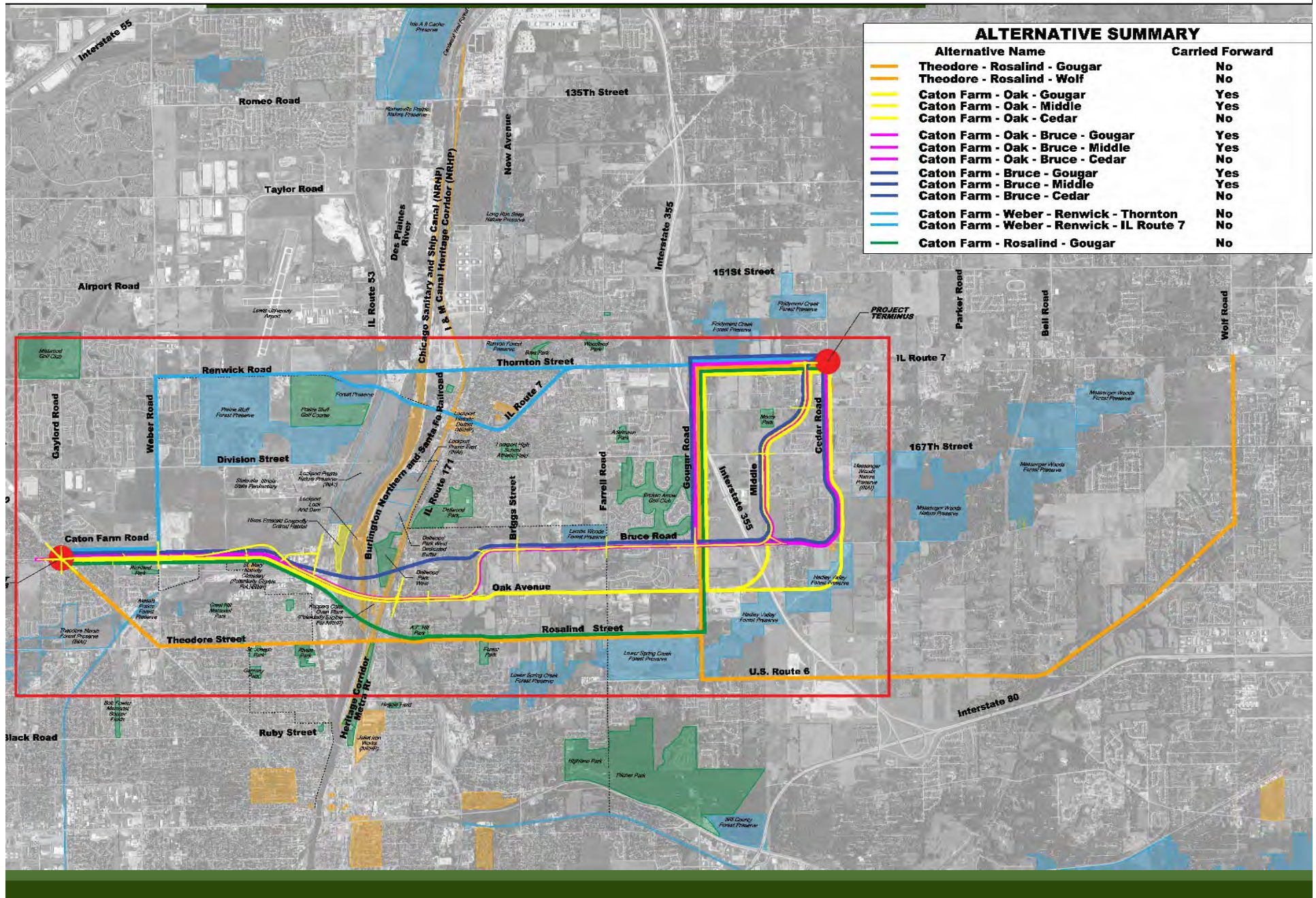


LEGEND

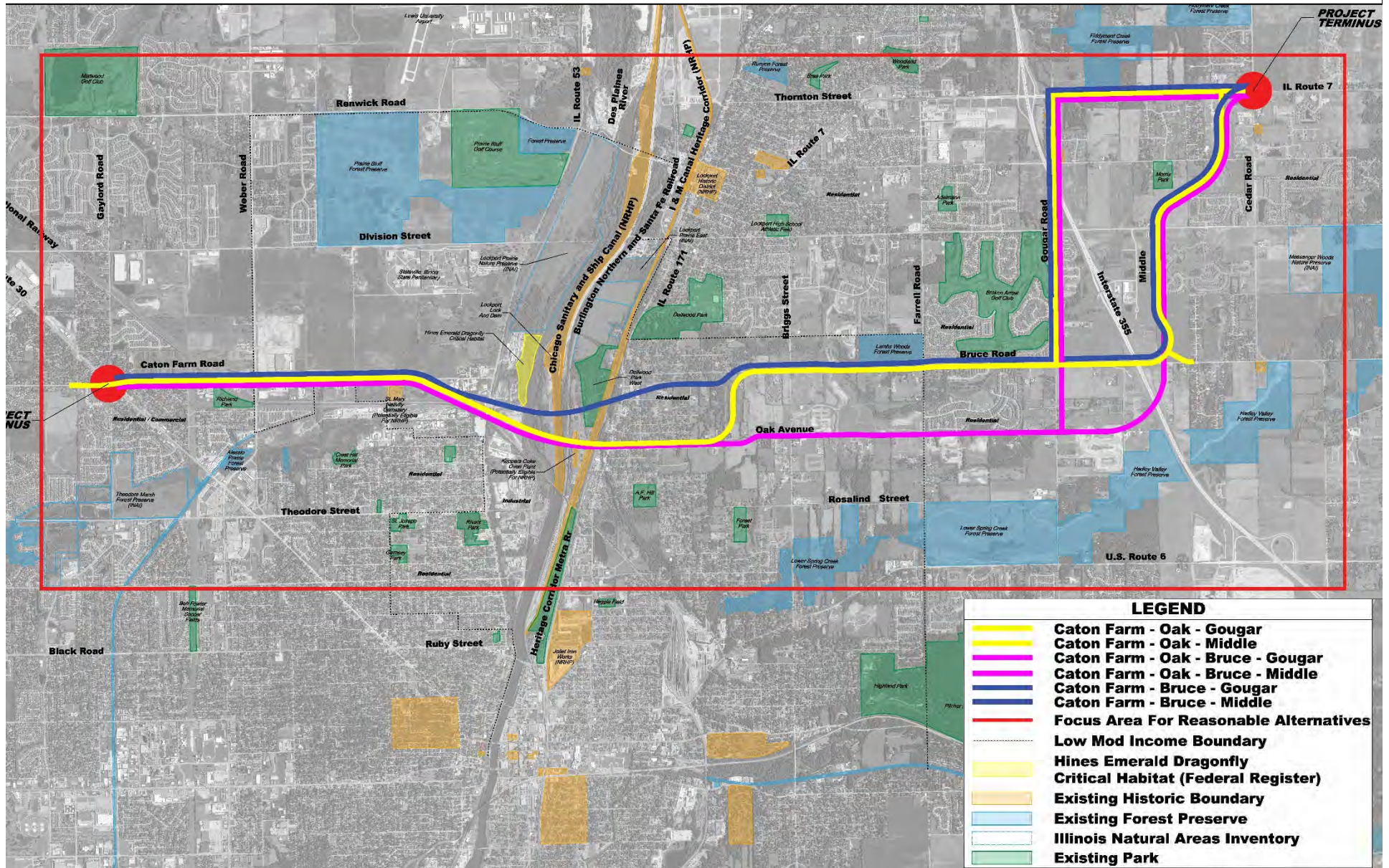
- Focus Area for Reasonable Alternatives
- Low Mod Income Boundary
- Previously Evaluated River Crossings
- Project Terminus
- Hines Emerald Dragonfly Critical Habitat (Federal Register)
- Existing Historic Boundary
- Existing Forest Preserve
- Illinois Natural Areas Inventory
- Existing Park



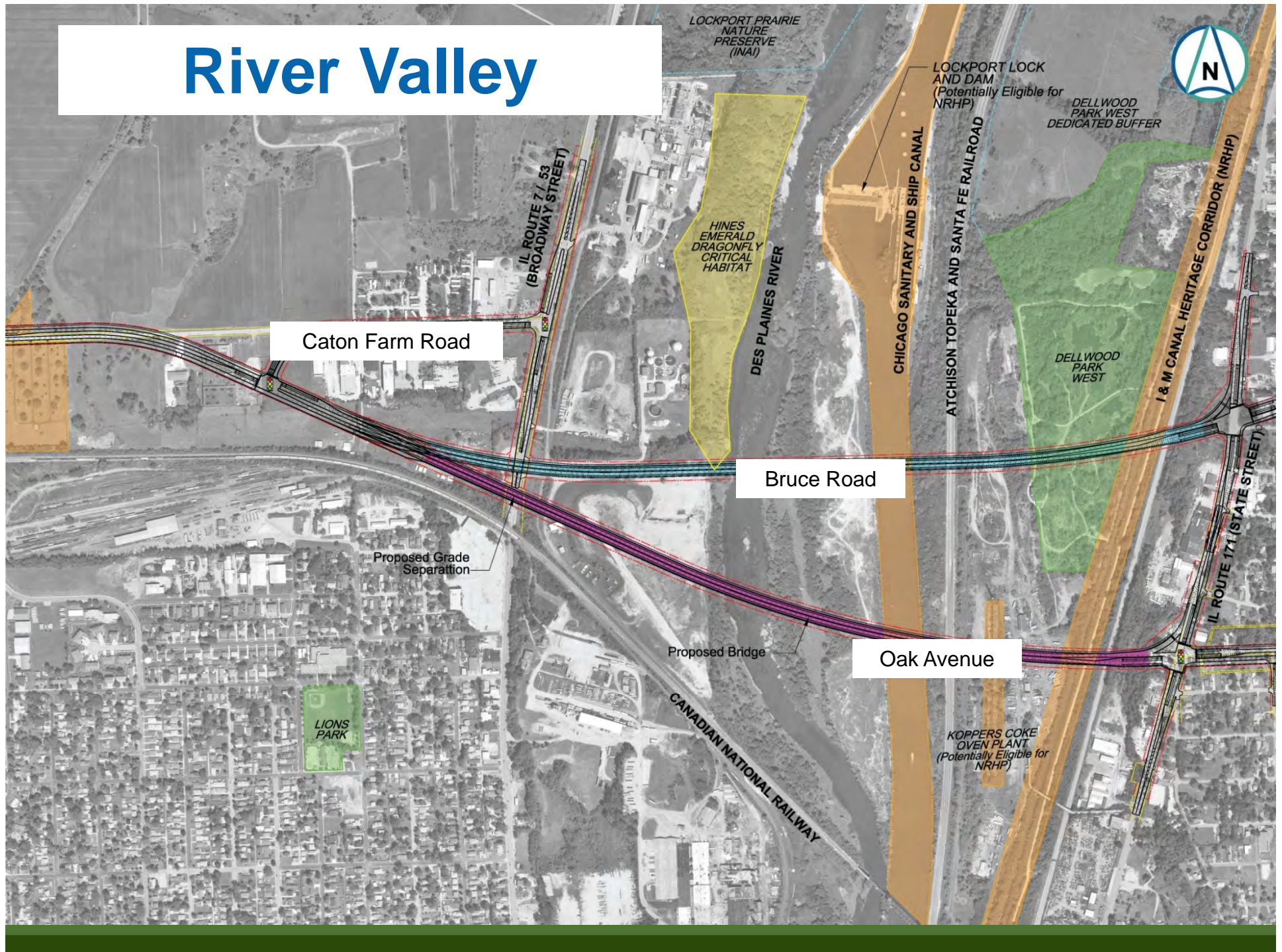
Alternatives Considered



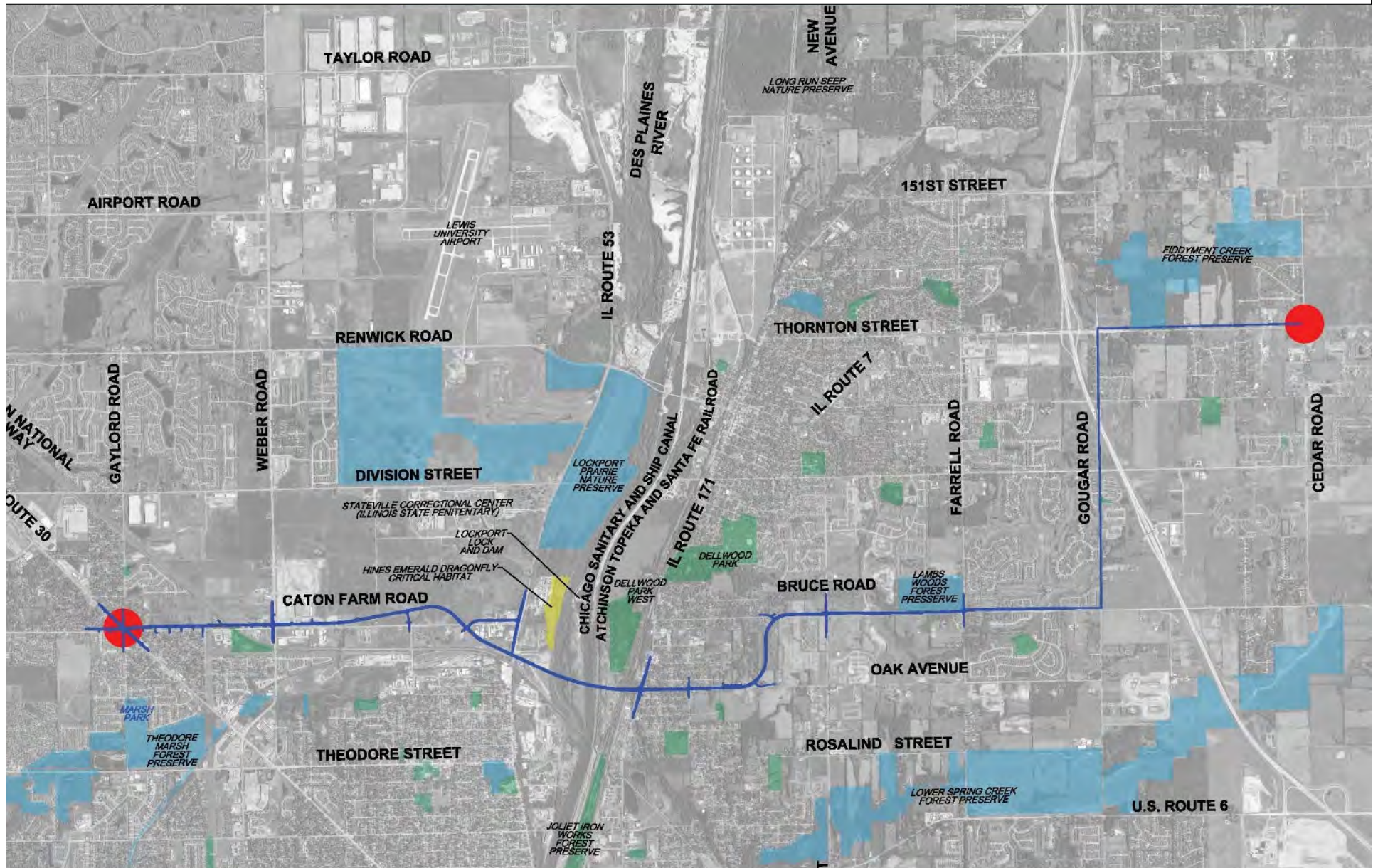
Alternatives to be Carried Forward



River Valley



Preferred Alternative



Why are we here?

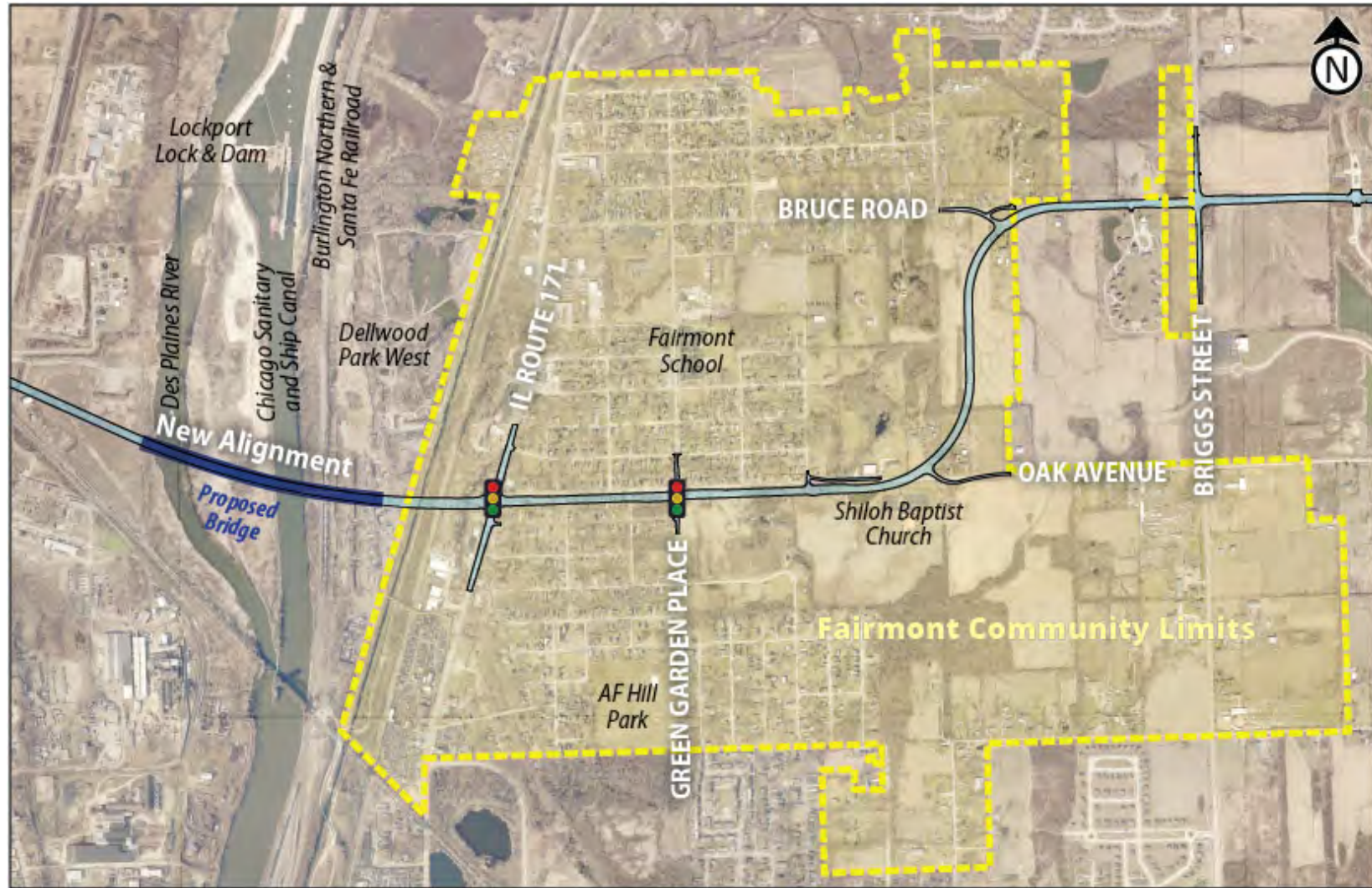
- The Fairmont Community was underrepresented at the previous 2019 PIM
- Coordination with the Fairmont Community hasn't occurred since 2014
- The preferred alternative travels down Oak Avenue, but there are many aspects of the design that have varying design options
- We don't live in this community, so we need help understanding the communities needs and identifiers that make it unique



Group Exercise



Fairmont Community Boundary



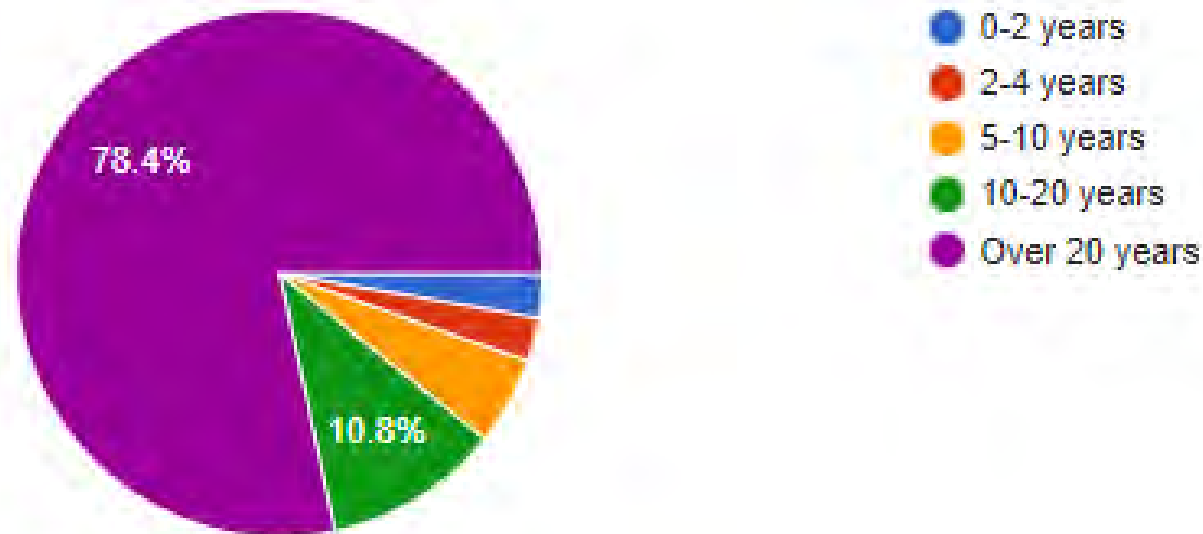
Questionnaire Results as of 10/8/21

- We mailed 1092 questionnaires and newsletters
- We received 36 in mail
- We received 4 responses on the online form



Questionnaire Results as of 10/12/21 (cont.)

- People have lived in the Fairmont Community for a long time, some since it's beginning



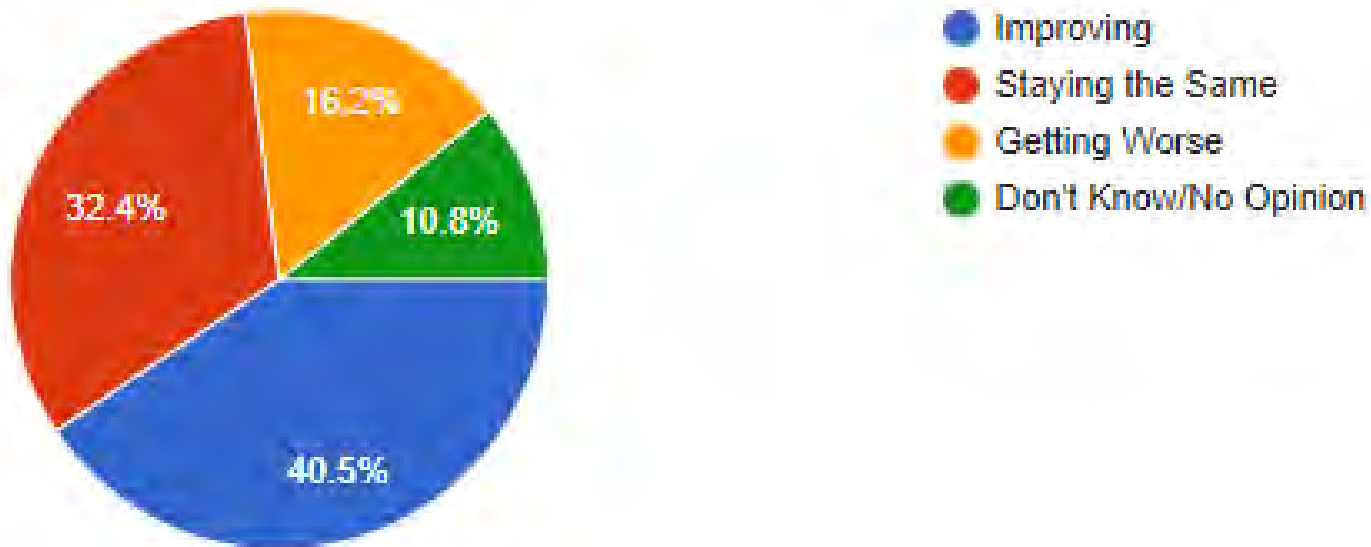
Questionnaire Results as of 10/12/21 (cont.)

- Many family members also live in the community



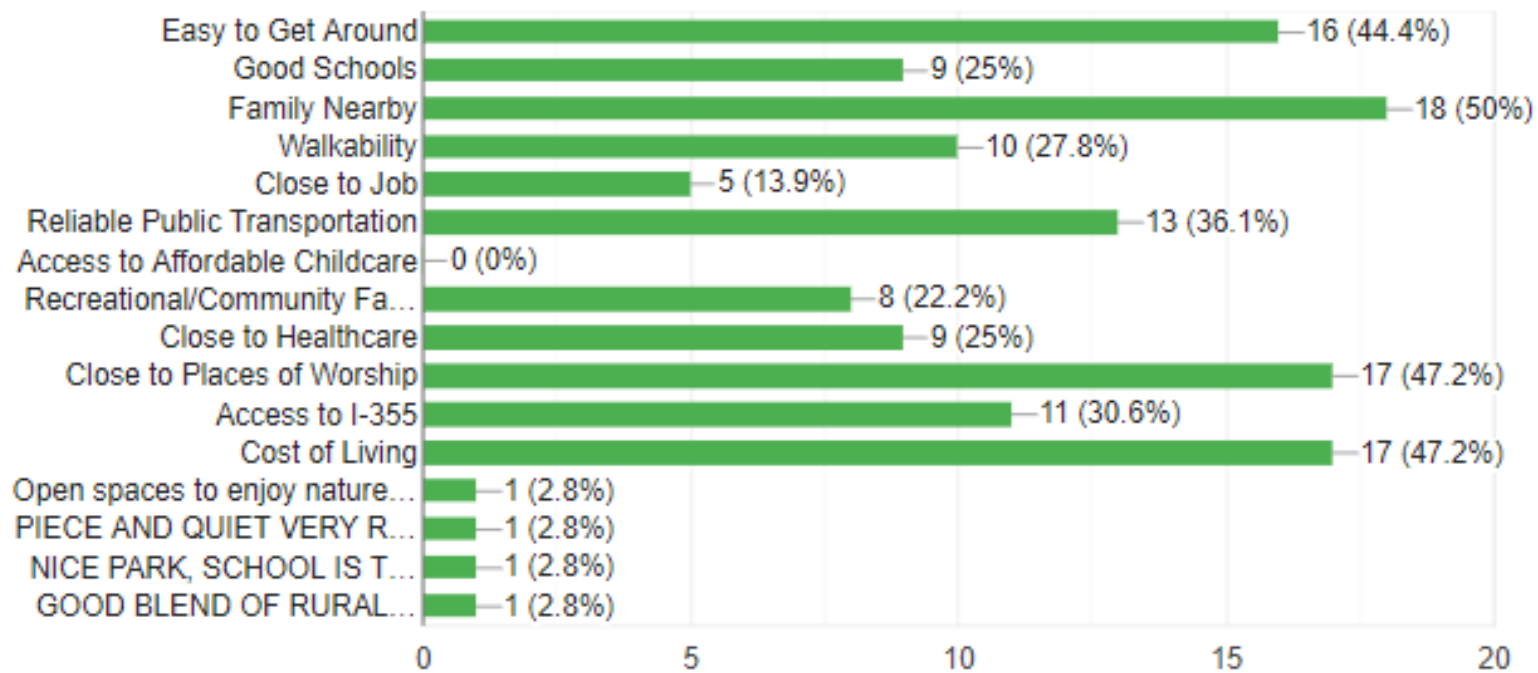
Questionnaire Results as of 10/12/21 (cont.)

- The view on the quality of life in the community is mixed



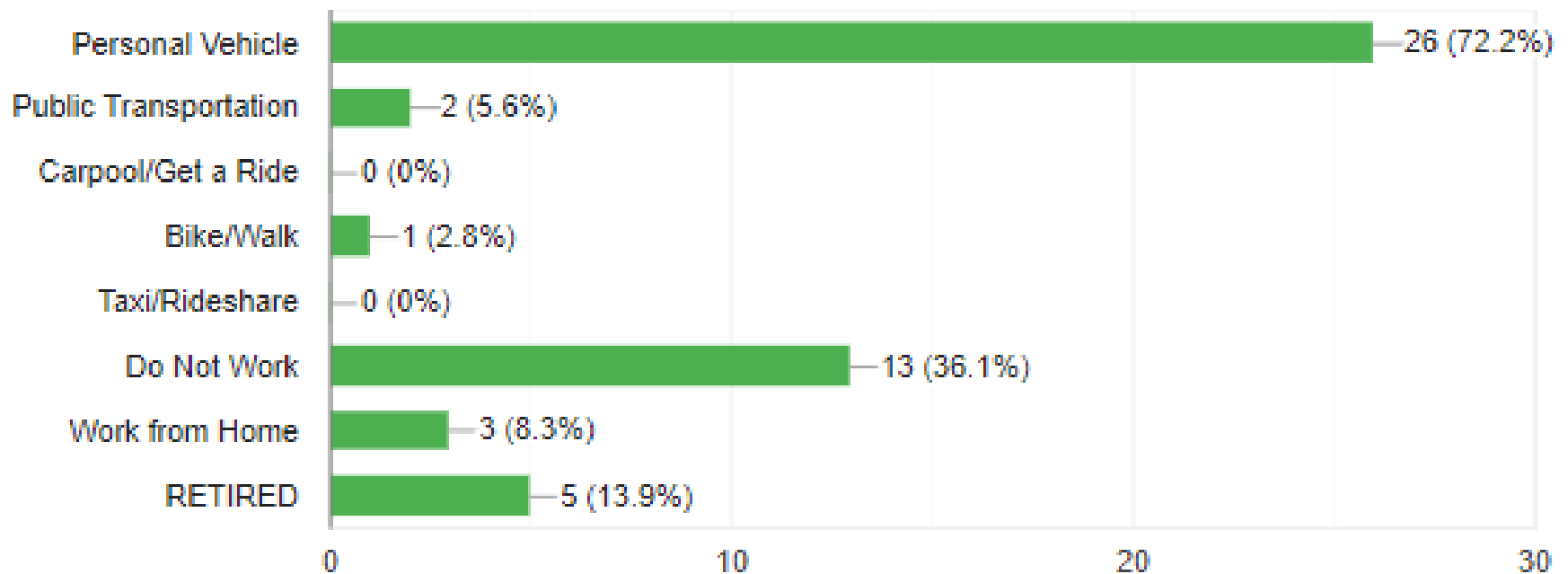
Questionnaire Results as of 10/12/21 (cont.)

- The top three items that are important to people in the community are cost of living, places of worship, family nearby, and ease of getting around in the community



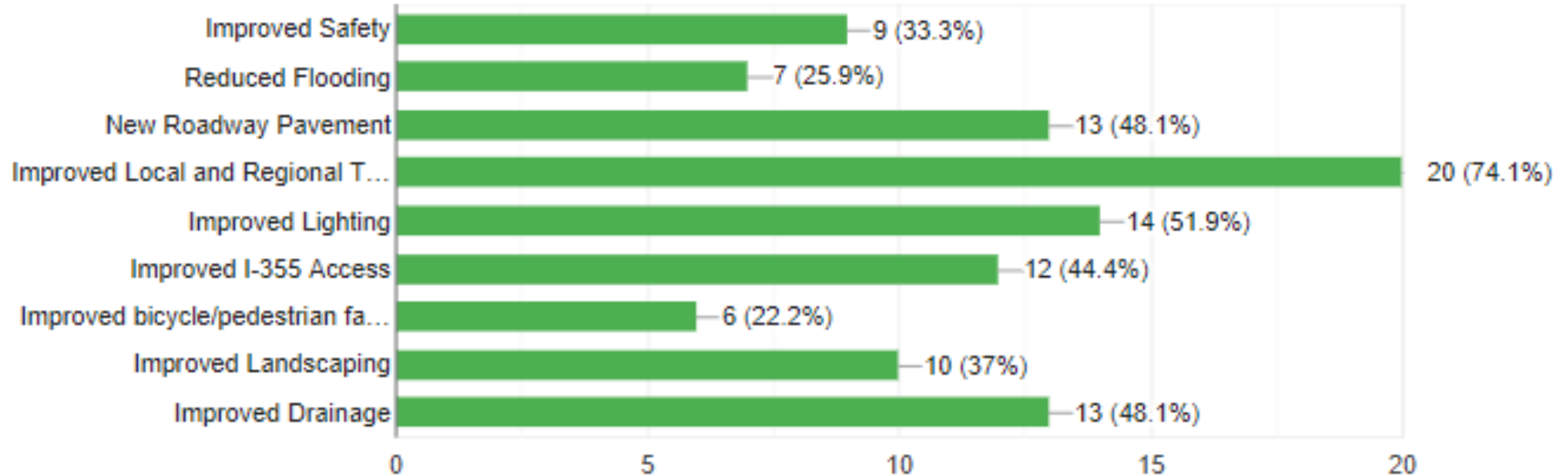
Questionnaire Results as of 10/12/21 (cont.)

- A majority of people travel to work in a personal vehicle



Questionnaire Results as of 10/12/21 (cont.)

- Improved local and regional travel times was the largest benefit perceived for the project



Questionnaire Results as of 10/12/21 (cont.)

- Community identifiers listed were:
 - Norma's Café
 - Conway's Barber Shop
 - Fairmont Community Center
 - Fairmont School
 - Dellwood Park
 - Shiloh Baptist Church



Questionnaire Results as of 10/12/21 (cont.)

- Concerns after construction of the Caton Farm – Bruce Road corridor were:
 - Increased traffic in the community
 - Property loss
 - New housing coming in to the community
 - Increased taxes
 - Gentrification



Group Exercise and Questionnaire Comparison



Analyzing the Results



- Continue to collect questionnaires until the Fairmont Community public meeting is held in mid-November
- Brainstorm aspects of the design that would benefit the community

Next Steps

- Continue to collect questionnaires
- Fairmont Community PIM (Mid November 2021)
- Distribute a 2nd newsletter following the PIM
- Stakeholder Involvement Group (SIG) Meeting #2 (January/February 2022)



Discussion

