

# Scoping Meeting

May 15, 2003



Caton Farm - Bruce Road  
Phase I Study



benesch

# Purpose of Today's Meeting

- Introduce the project.
- Explain project Purpose and Need.
- Identify important issues, concerns and constraints.
- Discussion of Alternatives.

# Historical Background

- 1962 Federal Transportation Bill requires regional transportation planning.
- 1962 Joliet Area Transportation Study Initiated.
- 1969 1985 long-range plan recommends high-level Des Plaines River bridge at Caton Farm Road/Bruce Road.

# Historical Background

- 1960's Fox Valley Freeway Study initiated.
- 1970 Illinois Route 7 High-Level Bridge was opened to traffic.
- 1981 Division Street Bridge damaged and closed permanently.
- 1988 Lockport Township Des Plaines River Study recommends additional river crossing.

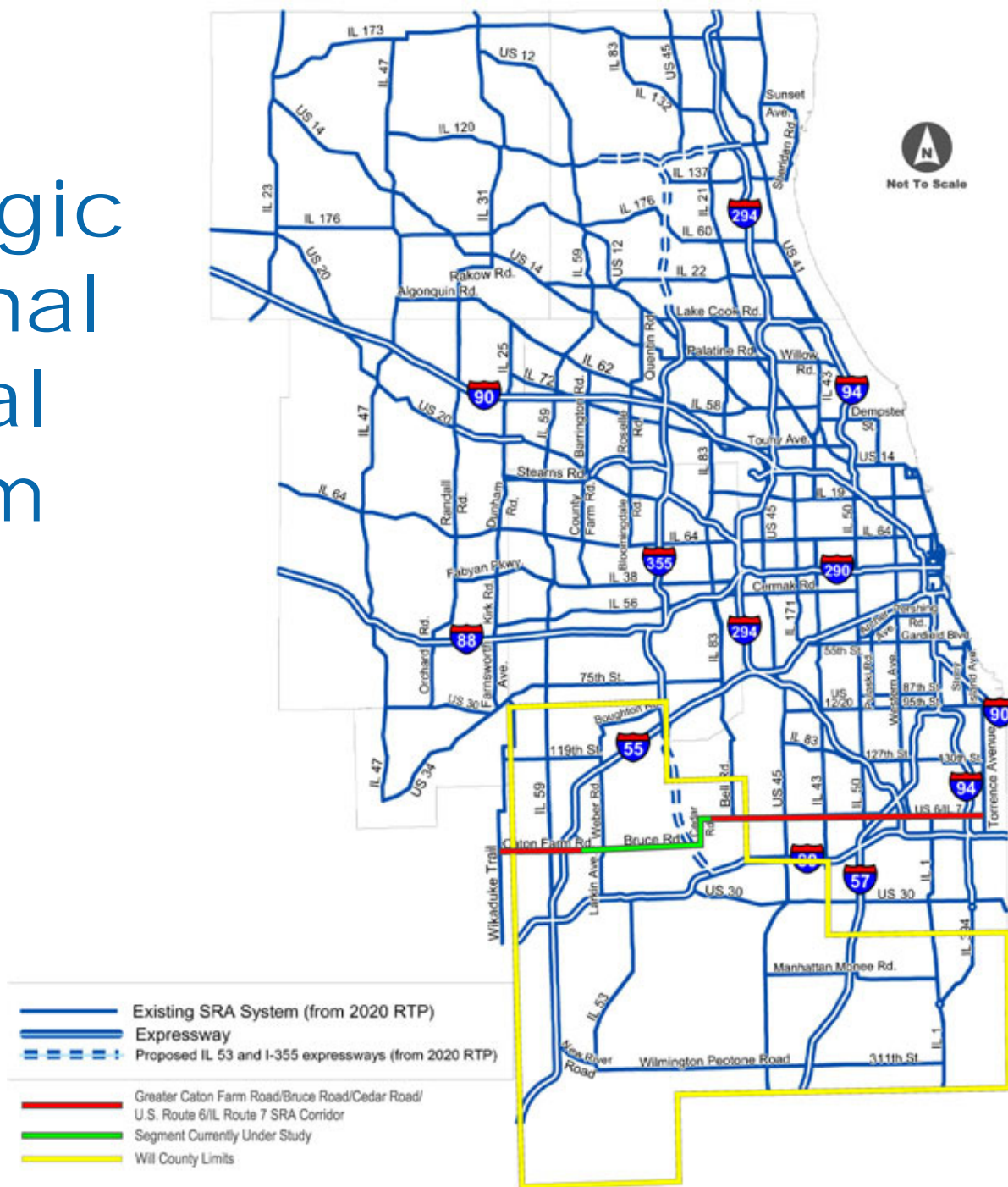
# Historical Background

- 1989 Strategic Regional Arterial (SRA) Network developed by IDOT.
- 1990's Fox Valley Freeway Study reinitiated with connection at Caton Farm-Bruce Road.
- 1991 Lockport Township high level bridge study recommends river crossing at Caton Farm-Bruce Road.

# Historical Background

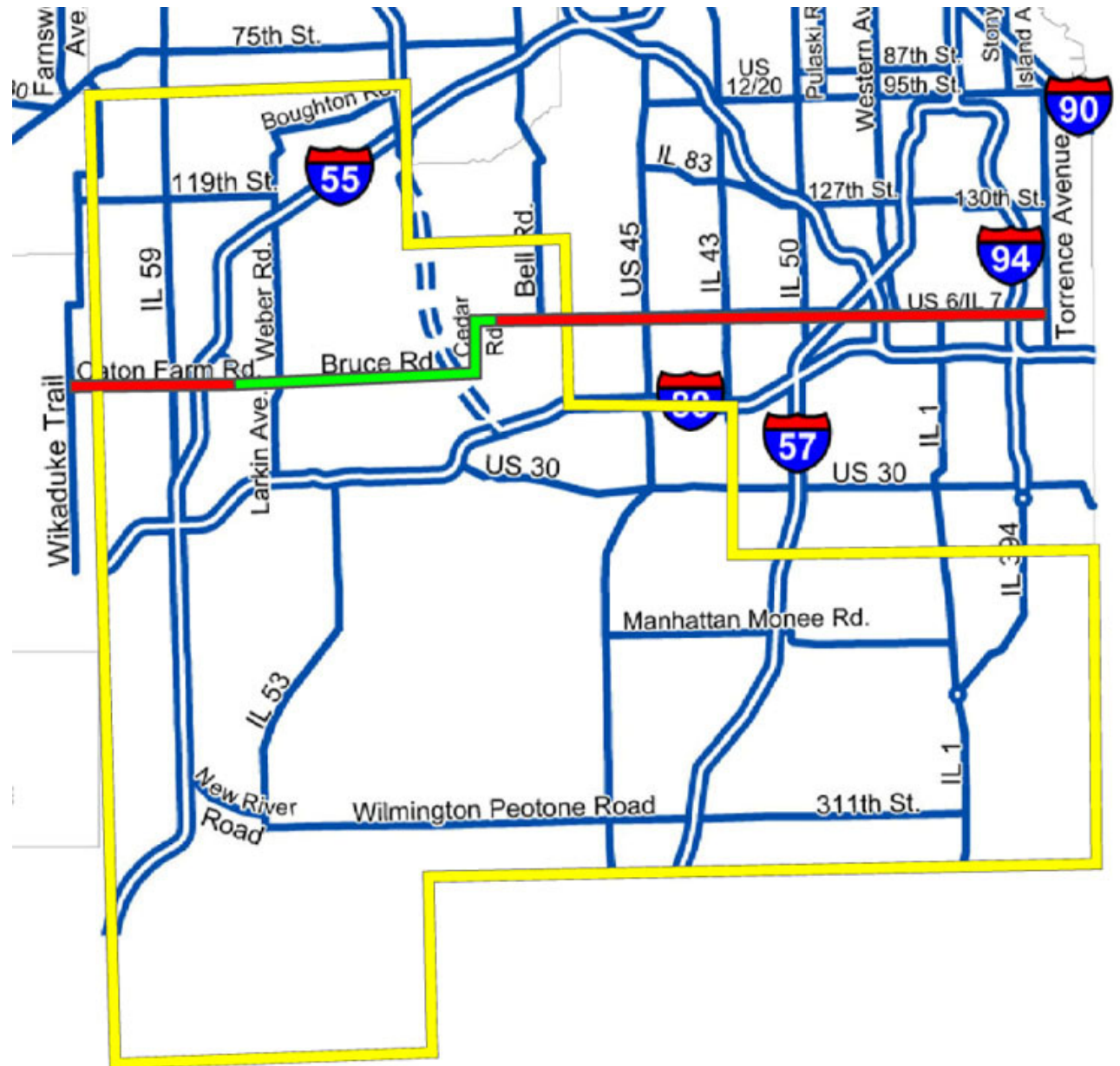
- 1992 135th Street Bridge closure.
- 1992 Caton Farm/Bruce Road/IL 7/U.S. 6 SRA Study initiated.
  - Corridor located along Renwick Road/IL 7/U.S. 6.
- 1995 Caton Farm/Bruce Road/IL 7/U.S. 6 SRA Study concluded.
  - Corridor relocated to Caton Farm/Bruce Road/Cedar Road/IL 7.

# 2020 Strategic Regional Arterial System





# 2020 Strategic Regional Arterial System (Will County)





# Historical Background

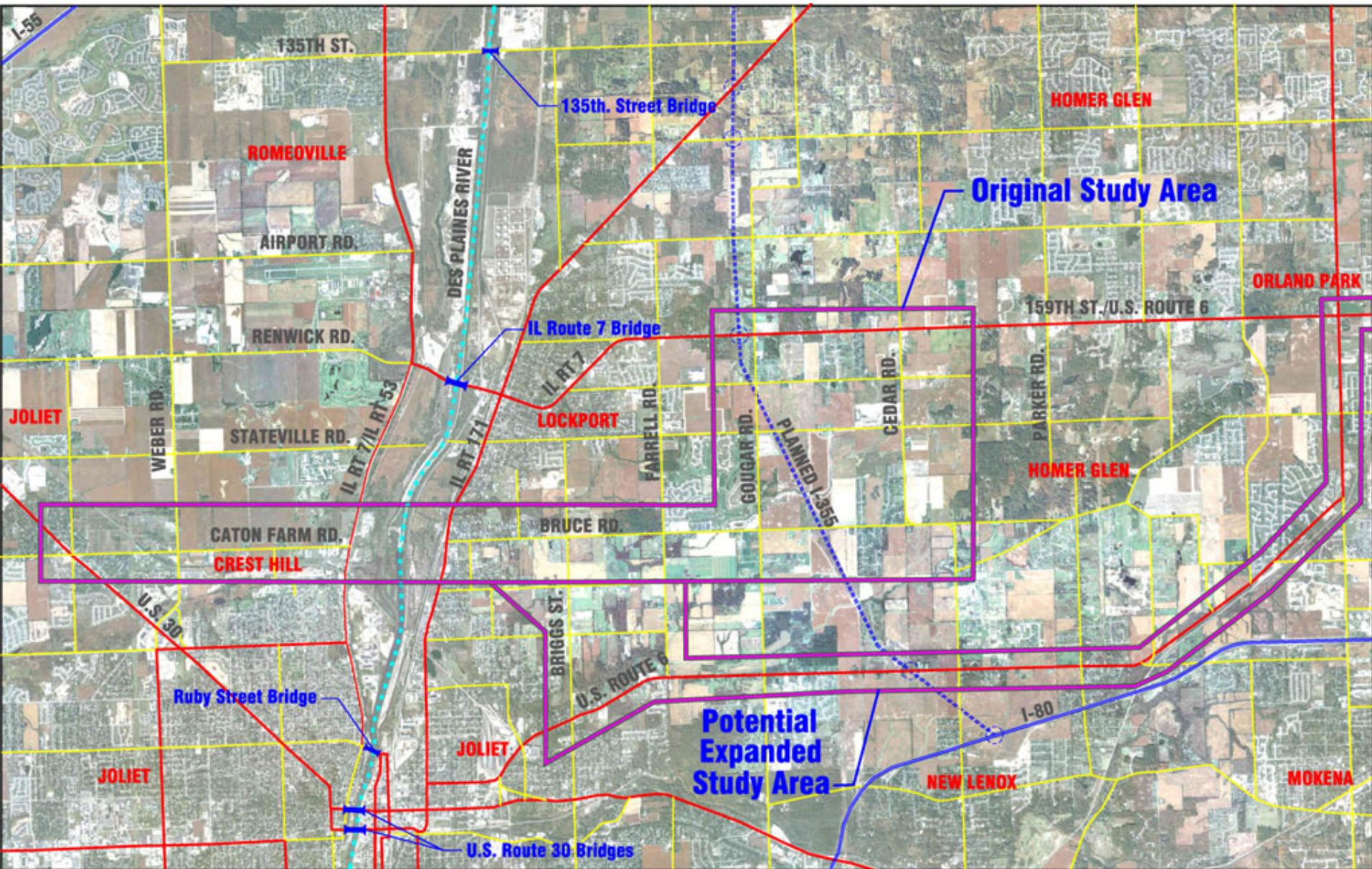
- 1998 New 135th Street Bridge is opened to traffic.
- 1999 Caton Farm-Bruce Road Technical Corridor Committee (TCC) formed.
- 2000 Caton Farm-Bruce Road Study consultant selection.
- 2000 Caton Farm-Bruce Road Study Logical Termini determination.
- 2001 Caton Farm-Bruce Road Study initiation.

# Historical Background

- 2002 Initial Public Information Meetings.
- 2002 Transportation Network Modeling.
- 2003 Traffic Conditions Report presented at February TCC meeting.
- 2003 Scoping meeting – May 15, 2003.



# Study Area Map



# Purpose and Need

# Why Purpose and Need (Required)

- Justification for resource commitment.
- Justification for impacts.
- Basis for eliminating alternatives.



# Objectives of Purpose and Need

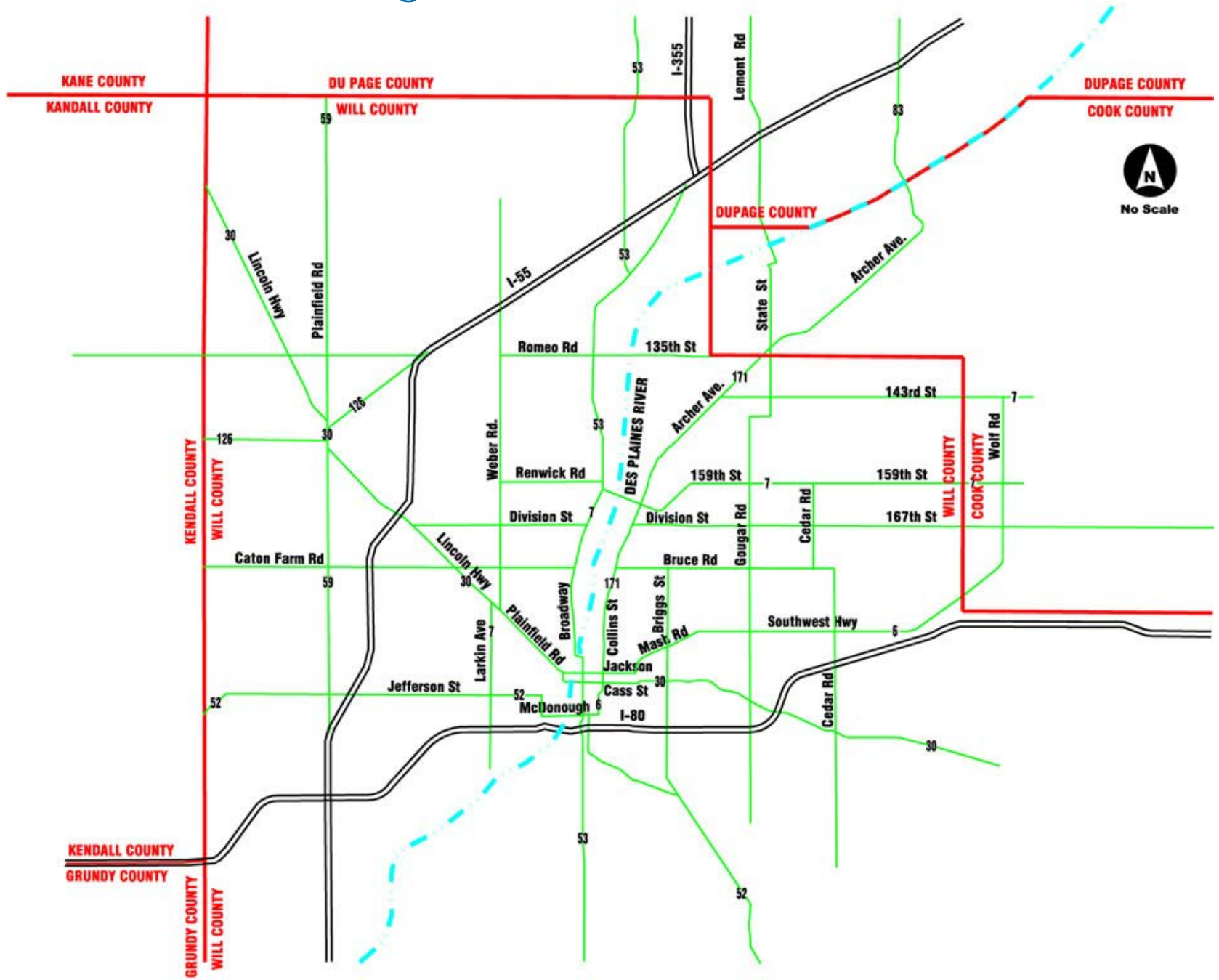
- Define why the project must be implemented.
- Establish logical termini and intermediate control points.
- Establish independent utility and significance.
- Comprehensive, specific, concise.

# Project Needs

- Provide additional regional east-west corridor crossing the Des Plaines River Valley.
- Serve projected population and economic growth.
- Complement regional and sub-regional transportation planning.
- Serve traffic demand.

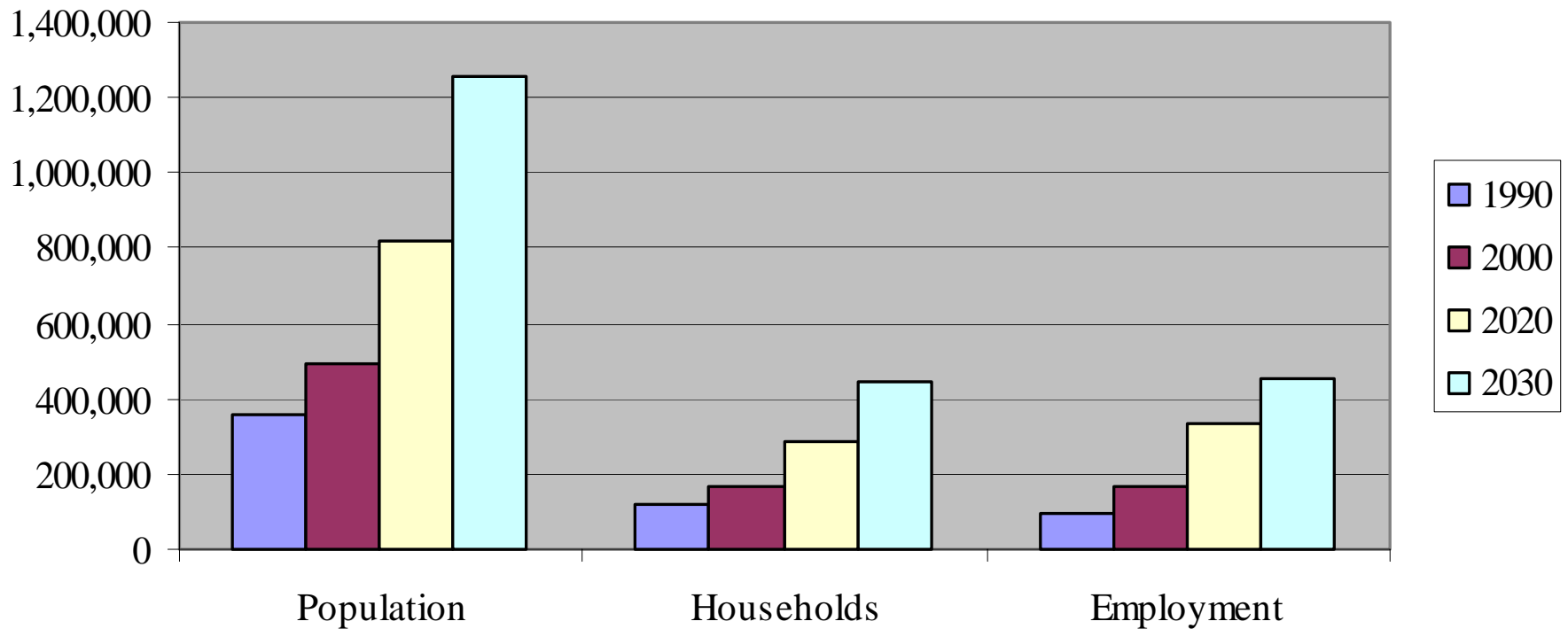


# Regional East-West Corridors

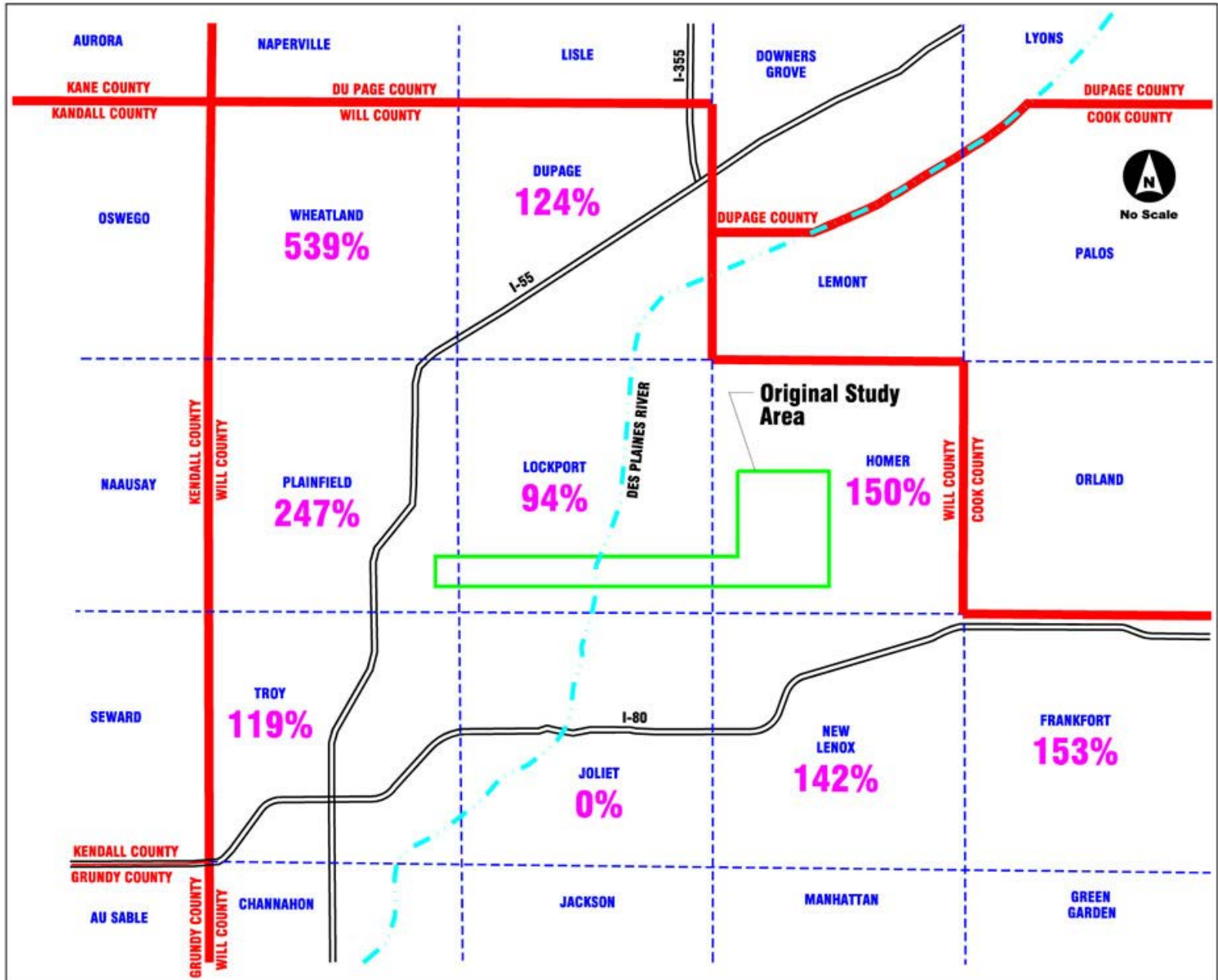


# Will County Population, Household & Employment Growth

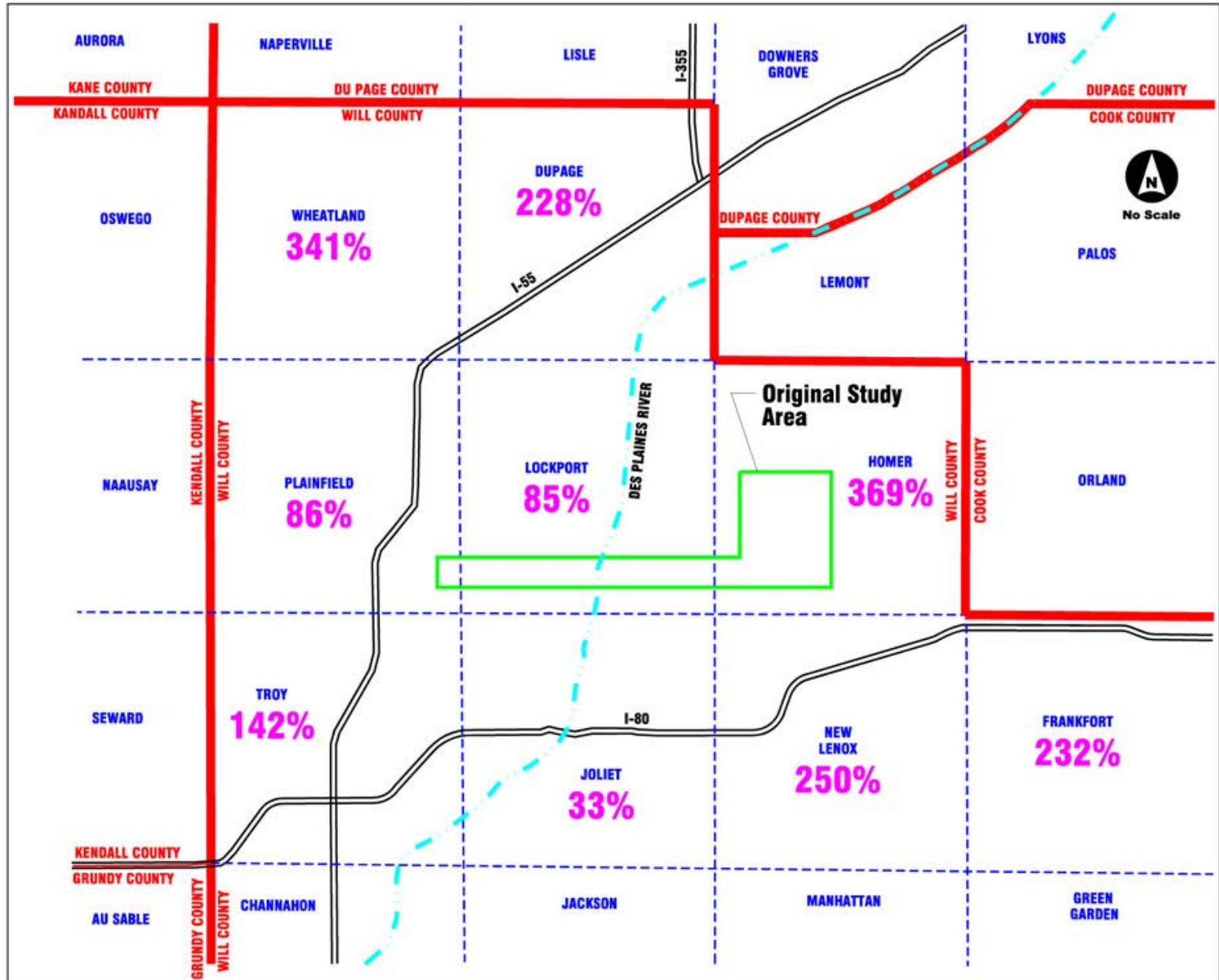
## Will County: Population, Household and Employment Growth



# Township Population Growth: 1990 to 2020



# Township Employment Growth: 1990 to 2020

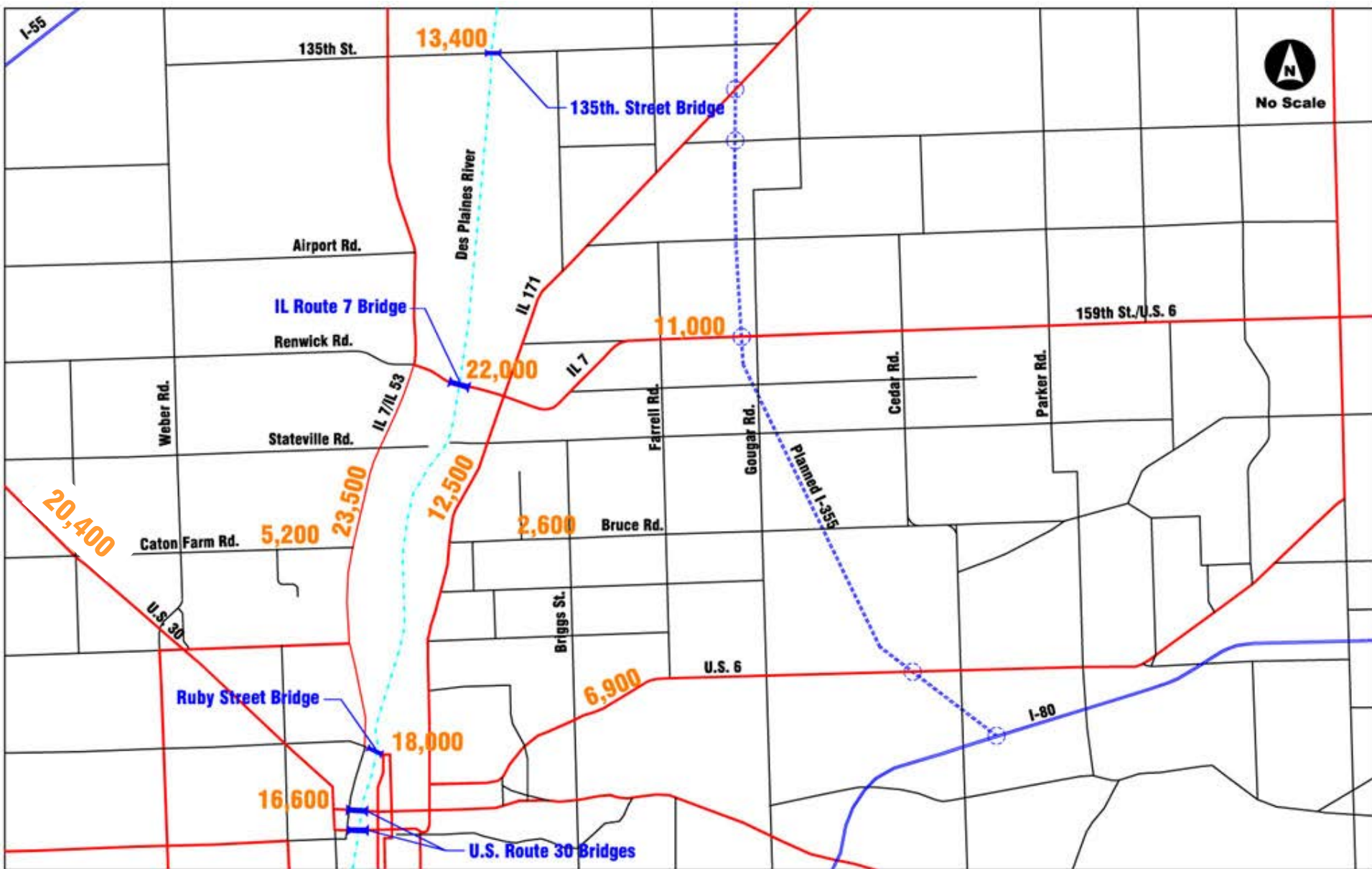


# Regional & Subregional Transportation Planning

- Chicago Area Transportation Study  
*2010 Transportation System Development Plan*  
*2020 Regional Transportation Plan*
- Will County  
*2020 Transportation Framework Plan*

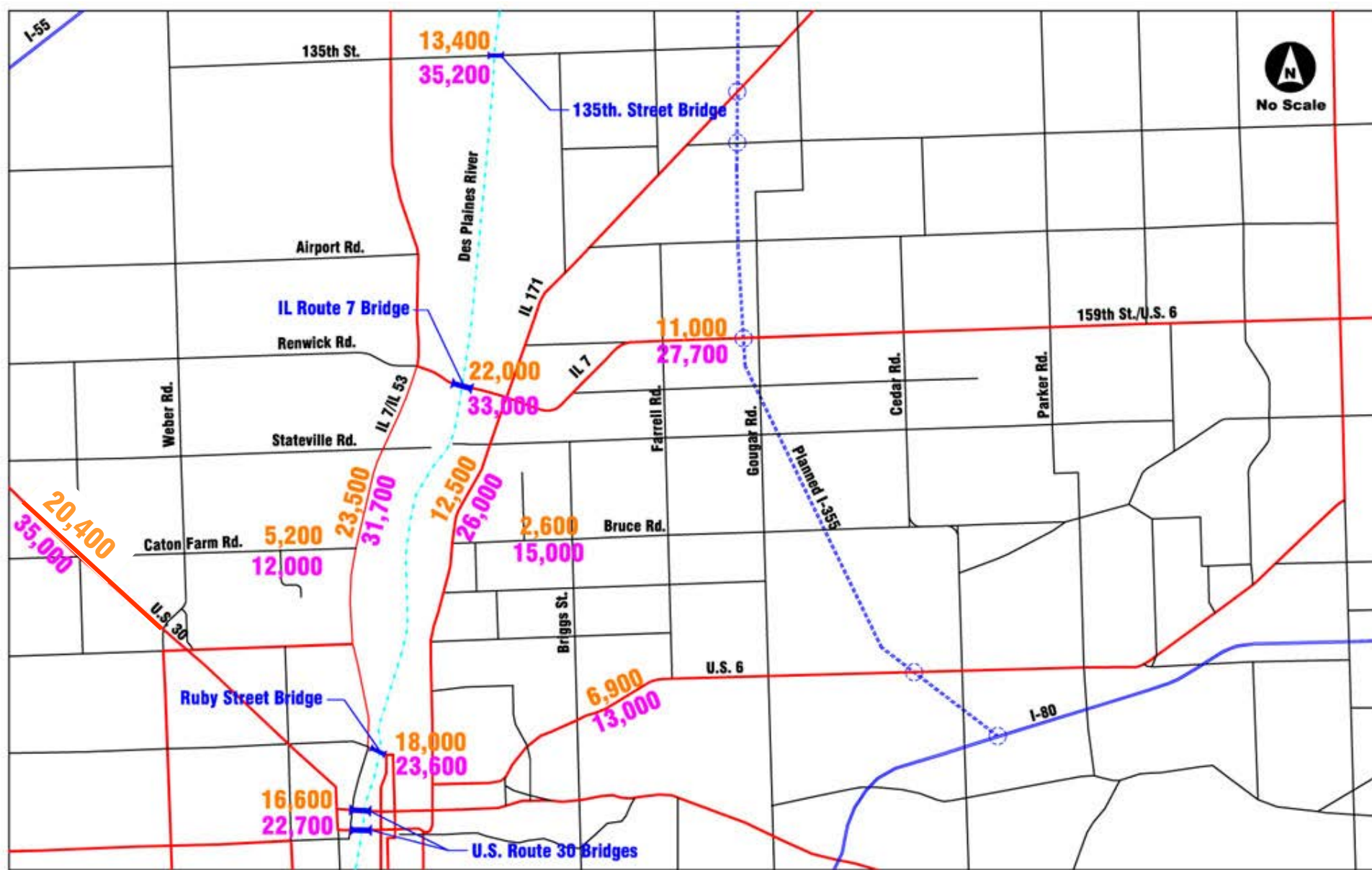


# Traffic Demand: 2001 Average Daily Traffic



# Traffic Demand: 2025 Average Daily Traffic

XX,XXX = 2001 XX,XXX = 2025





# Existing Conditions/ Environmental Resources