

# Project Update

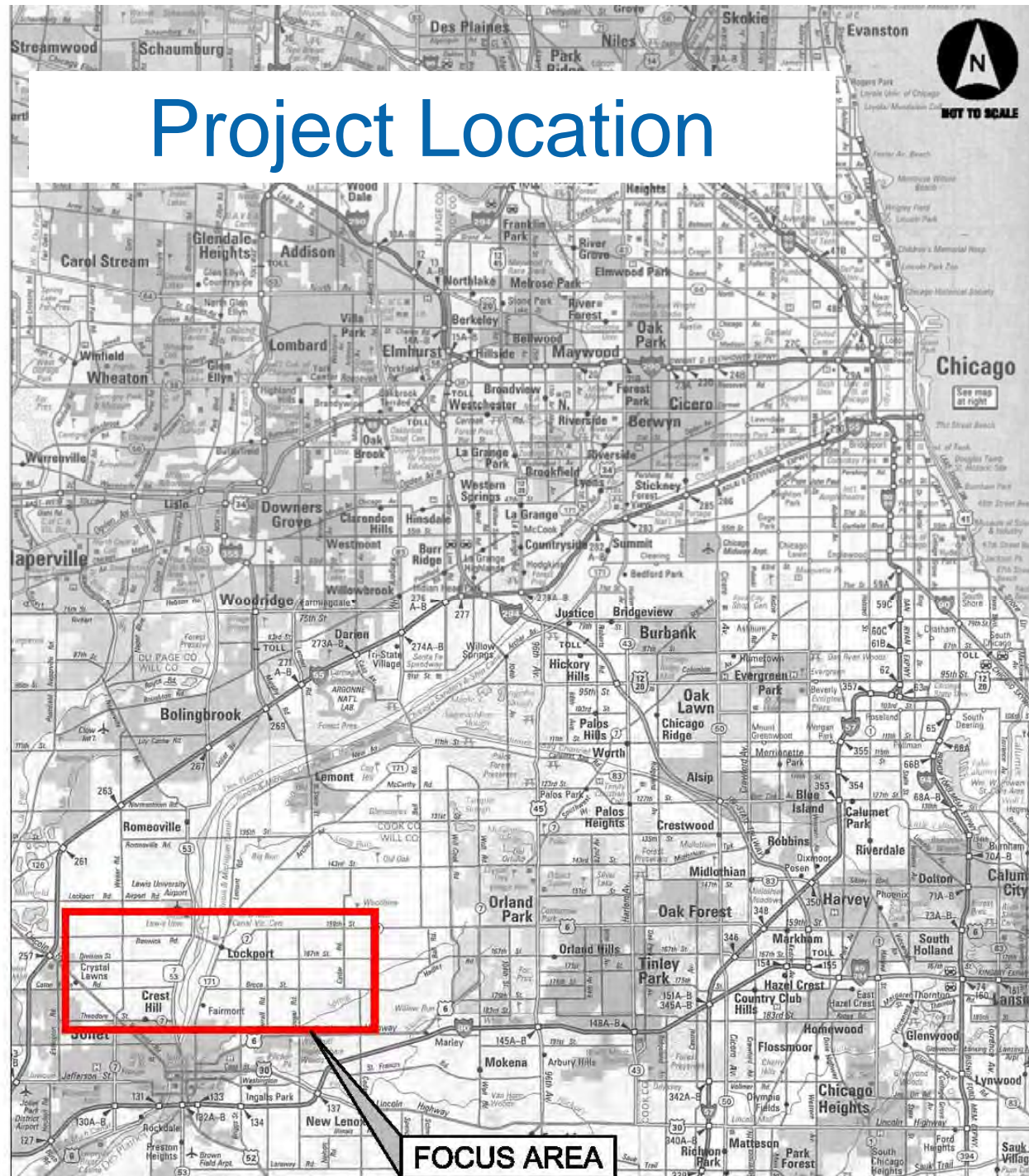


Caton Farm - Bruce Road  
Phase I Study



September 19, 2019

# Project Location



# Project Location

- Urban fringes 30 miles southwest of Chicago and 3 miles north of Joliet.
- Corridor extends 11 miles.



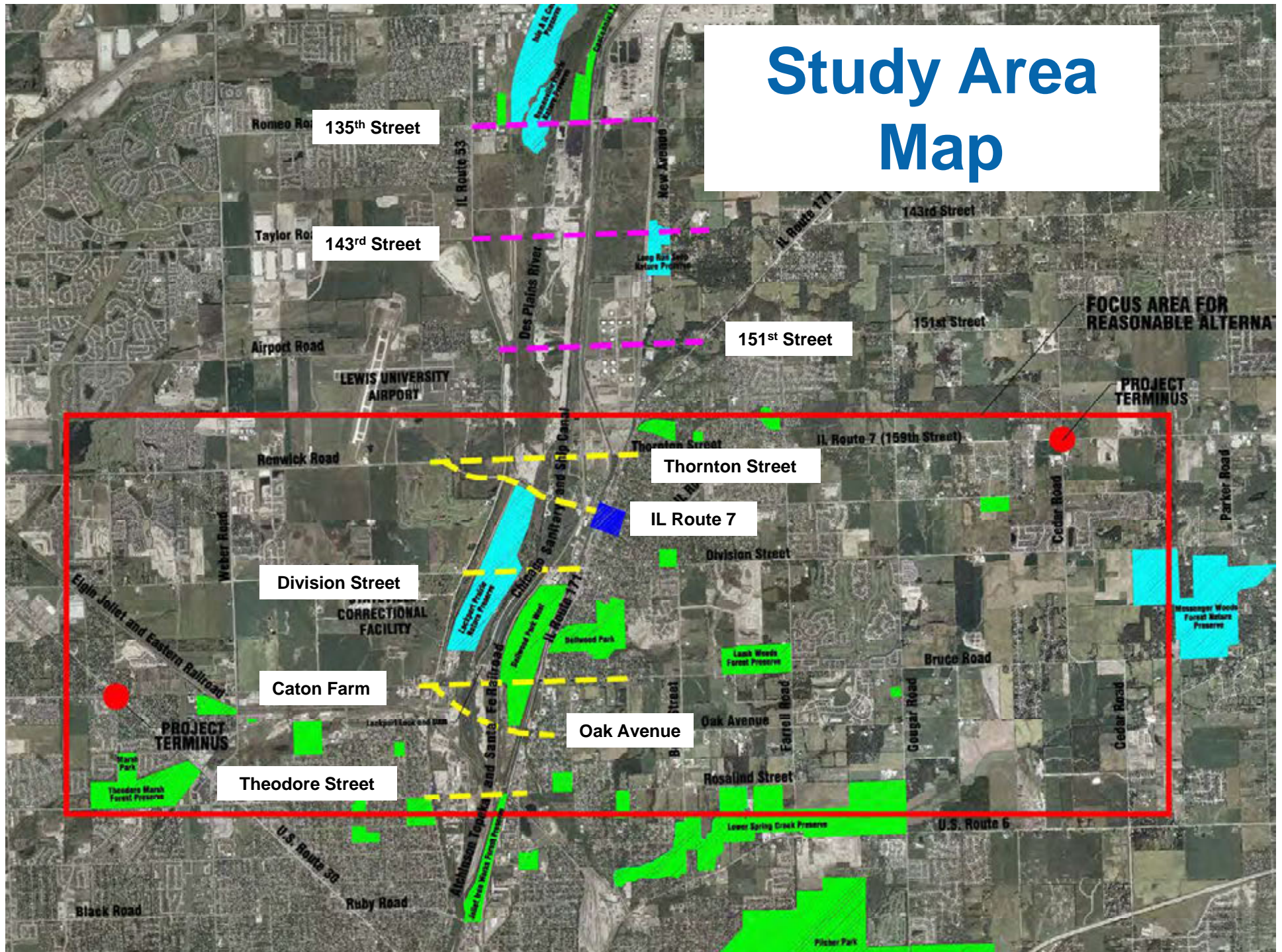
# Project Purpose

The purpose of the Proposed Action is to provide a transportation system improvement that will address capacity, operational, and safety deficiencies; and satisfy projected travel demands within a regional corridor extending between Caton Farm Road at U.S. Route 30 and IL Route 7 (159th Street) at Cedar Road.





# Study Area Map



# Build Alternatives

- Potential for a large number of reasonable alternatives.
- A representative number, covering a full range of alternatives were analyzed.

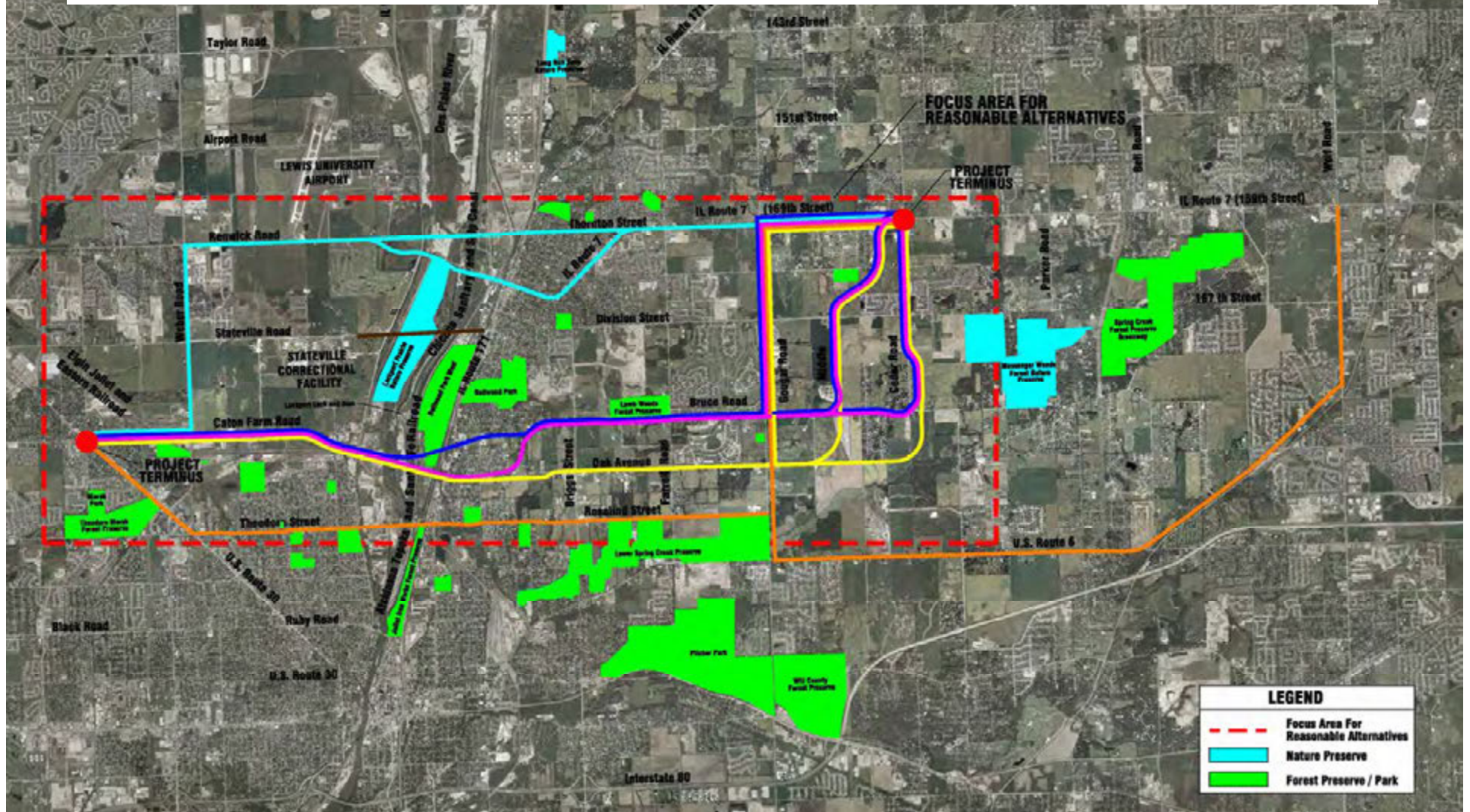




# Build Alternatives

## ALTERNATIVE SUMMARY

Alternative Name	To Be Carried Forward
Theodore - Rosalind - Gougar	No
Theodore - Rosalind - Wolf	No
Caton Farm - Oak - Gougar	Yes



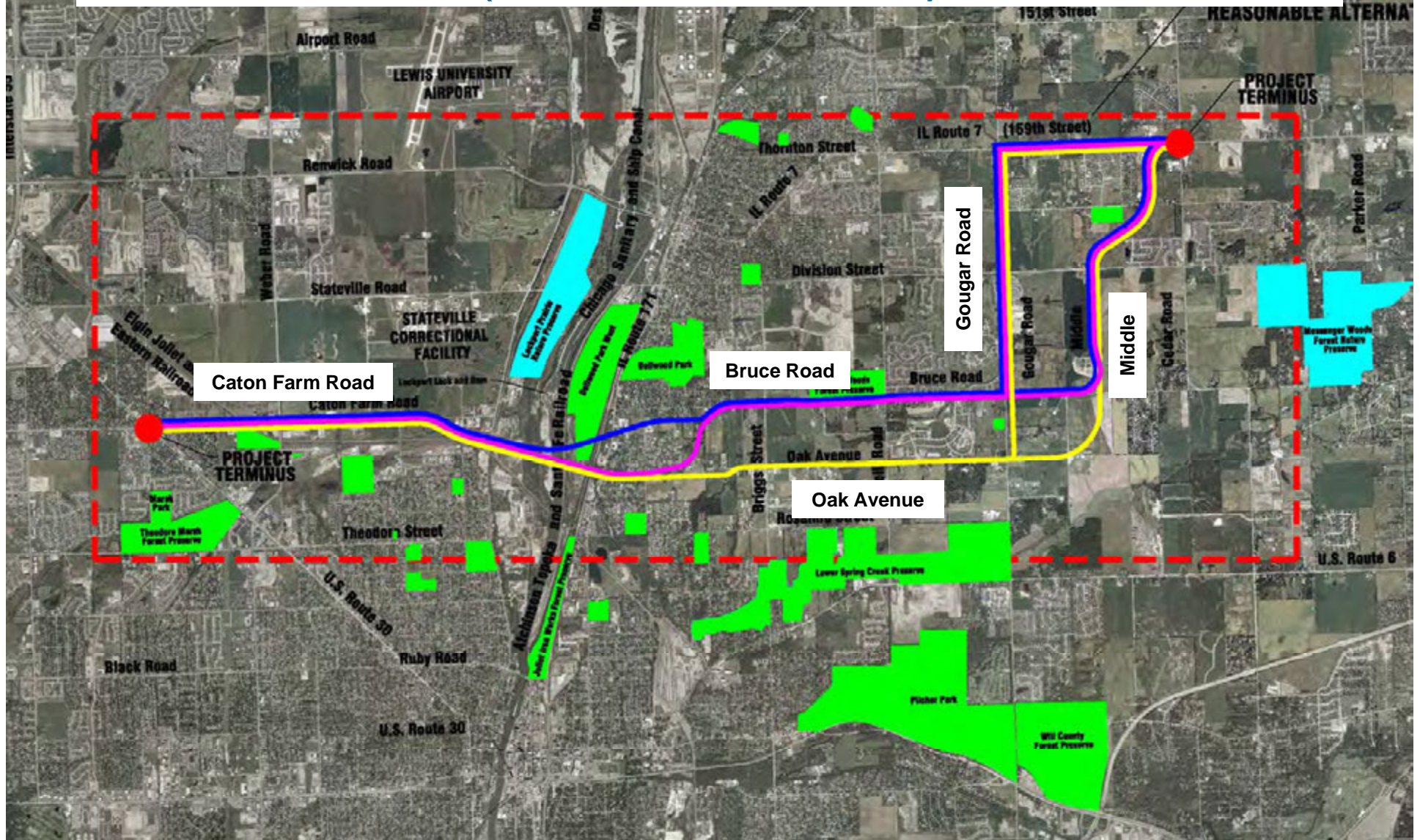
# Build Alternatives

- Each Build Alternative consists of:
  - 2 through lanes in each direction.
  - Median to accommodate channelization.
  - 3 through lanes in each direction on bridge.
  - Sidewalk
  - Bikepath
  - Intersection improvements





# Alternatives to Be Carried Forward (CP#2 – 01/07)



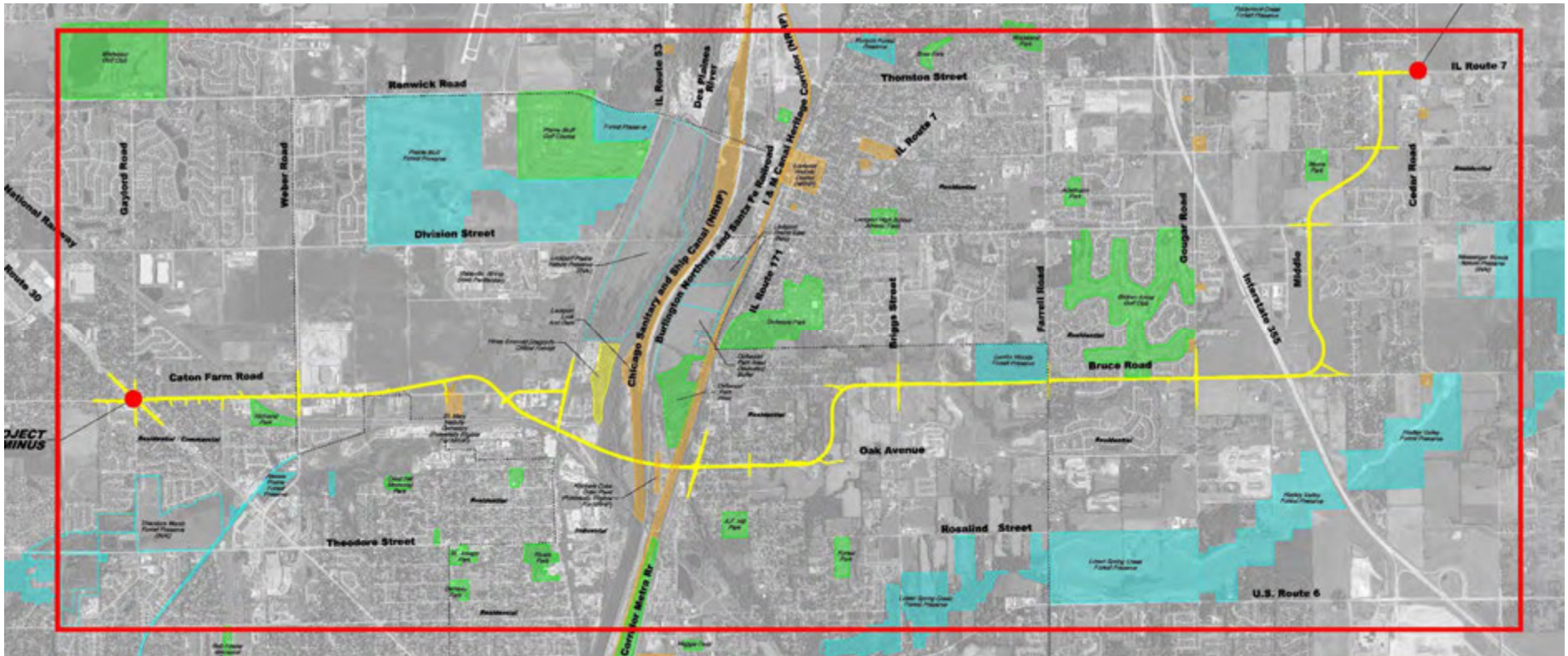
# Alternatives to Be Carried Forward

- 2007 Agency Coordination
  - U.S. Coast Guard – Lock & Dam
  - USFWS – HED Critical Habitat
- 2007 Public Input
  - Supportive of new bridge
  - No clear alignment choice
- 2009 Will County Board resolution
  - Caton Farm- Oak-Bruce-Middle Alignment



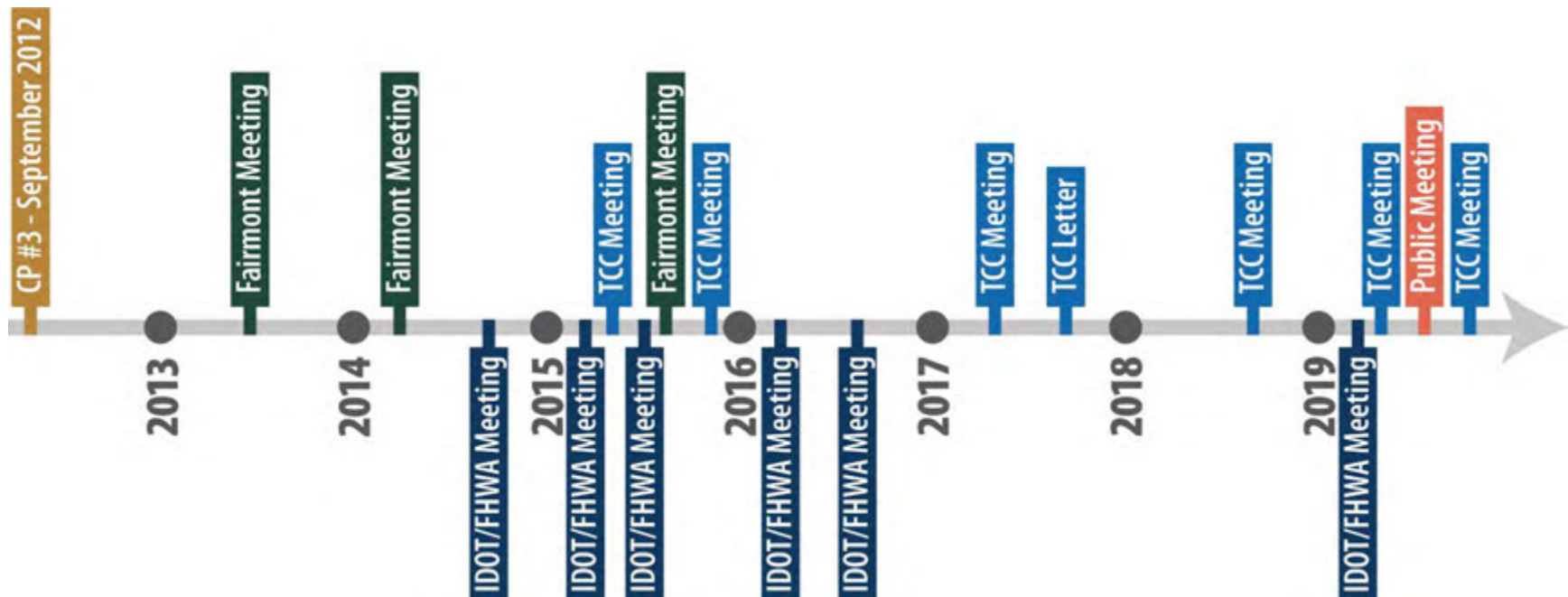


# Preferred Alternative – (CP#3 – 09/12) Caton Farm-Oak-Bruce-Middle





# Ongoing Agency Coordination



# Ongoing Local Agency Coordination

- Concern over loss of development opportunities with Middle Alignment
- Concern over impact to school property and proximity to school



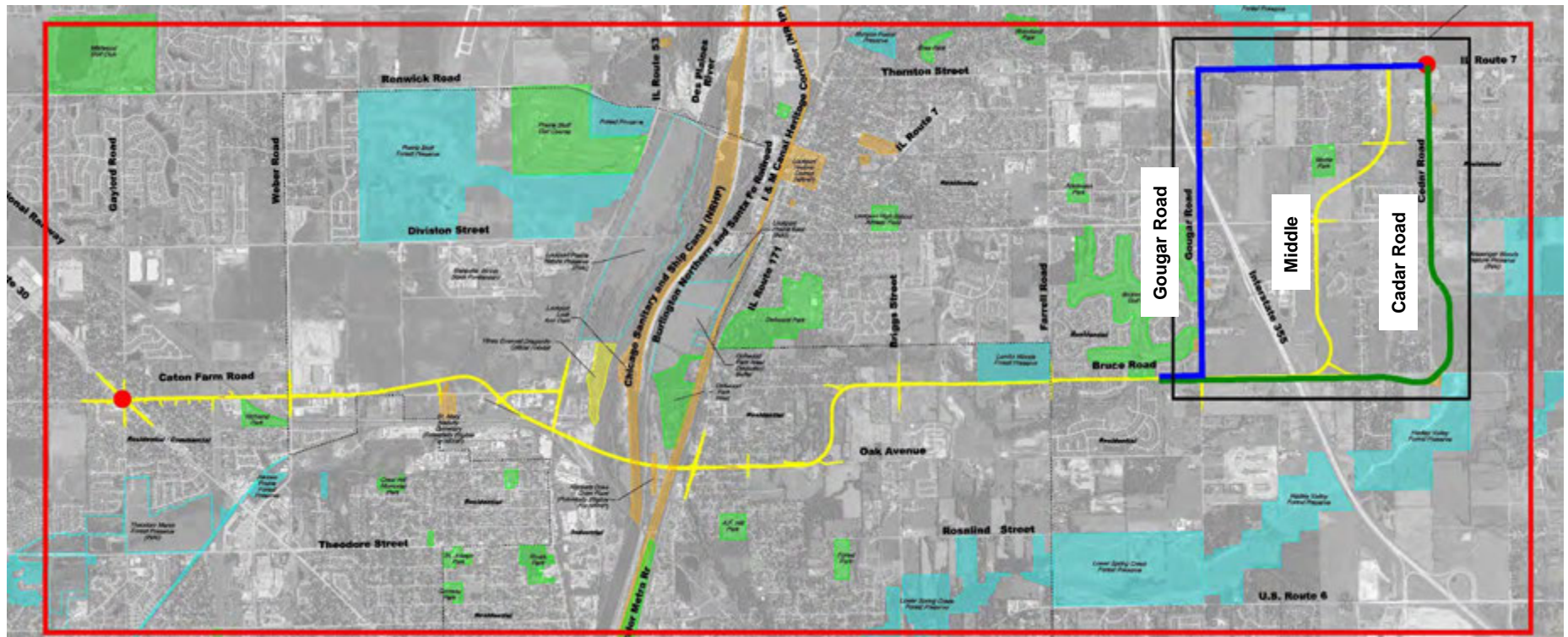
# Ongoing Local Agency Coordination

- Options for reconsidering the Middle Alignment
  - Changing logical termini
  - Using I-355 for north-south link
  - Reevaluating the Gougar and Cedar north-south links





# Alternatives to Be Reevaluated



# Impact Summary

Impact	No-Action	Caton Farm Oak Bruce Gougar	Caton Farm Oak Bruce Middle	Caton Farm Oak Bruce Cedar	Common Route (Gaylord to Gougar)
Potential Wetland Encroachment (acres)	0	1.7	1.9	1.7	1.6
Potential Floodplain Encroachment (acres)	0	11	17	14	9
Potential Section 4(f) Encroachment (acres)	0	1.3	0.5	0.5	0.5
Potential Historic Feature Impacts	0	8	4	8	4
Potential Special Waste Sites Impacts	0	48	49	45	41
Potential Environmental Justice Concerns	No	Yes	Yes	Yes	Yes
Potential for HED Impacts	No	Yes	Yes	Yes	Yes
Displacements					
Residential	0	26	34	29	24
Commercial	0	8	10	8	8
Agricultural	0	0	0	0	0
Other	0	0	0	0	0
Total	0	34	44	37	32
ROW Acquisition (acres)					
Residential	0	28	27	32	25
Commercial	0	27	26	28	26
Agricultural	0	59	98	71	53
Other	0	44	48	46	43
Total	0	157	199.5	176	146
ROW Acquisition (Parcels)					
Total	0	385	388	446	355



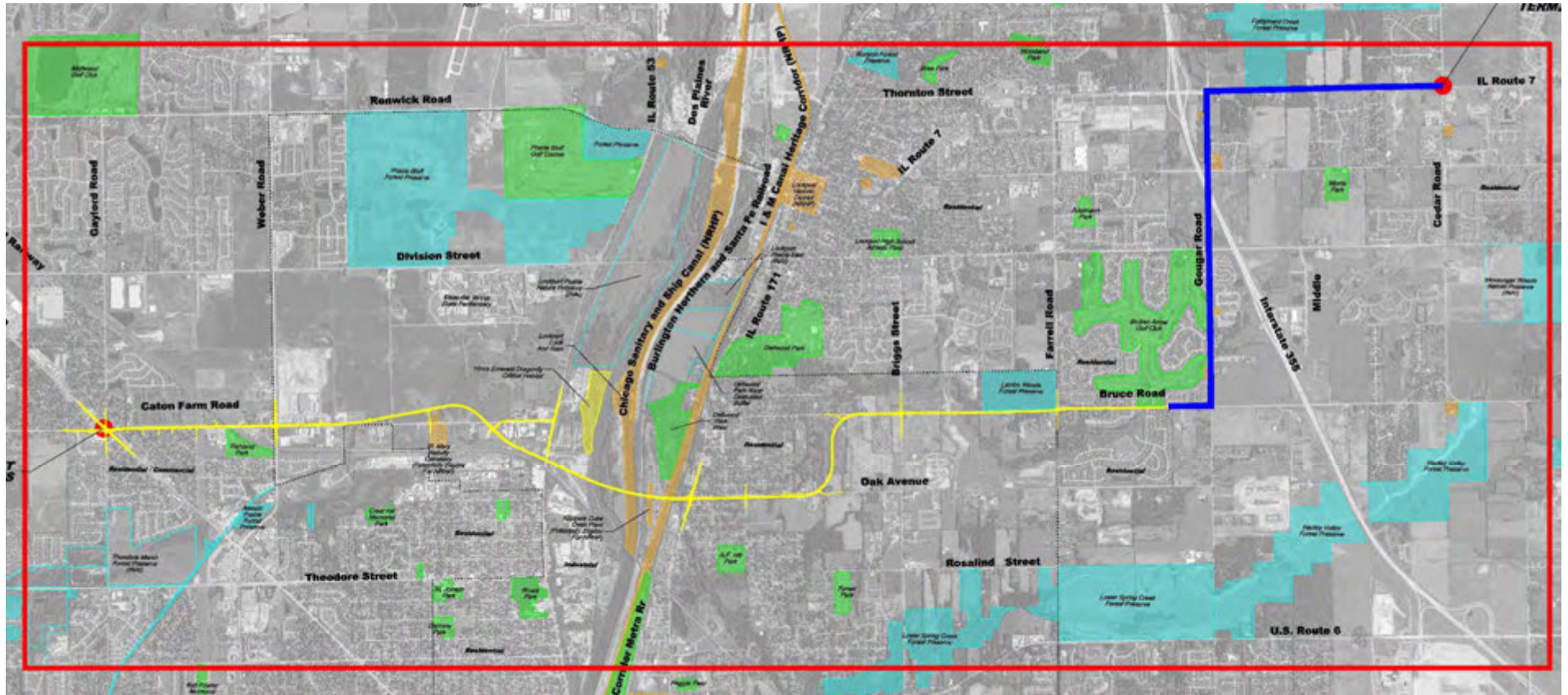
# Outcomes of Reevaluation

- No clear top performer from impact standpoint
- Gougar Road
  - Best access to I-355
  - Uses existing infrastructure
  - Does not prevent development opportunities





# Caton Farm – Oak – Bruce – Gougar Alternative



# Resolutions

- Local Support for the Caton Farm-Oak-Bruce-Gougar Alignment
  - Lockport
  - Homer Glen
  - Homer Township
  - Will County



# Discussion



# Next Steps

- Refinement of Locally Preferred Alternative
- Concurrence Point #3 – February 2020





# River Valley

