

# Concurrence Point #3

## Selected Alternative

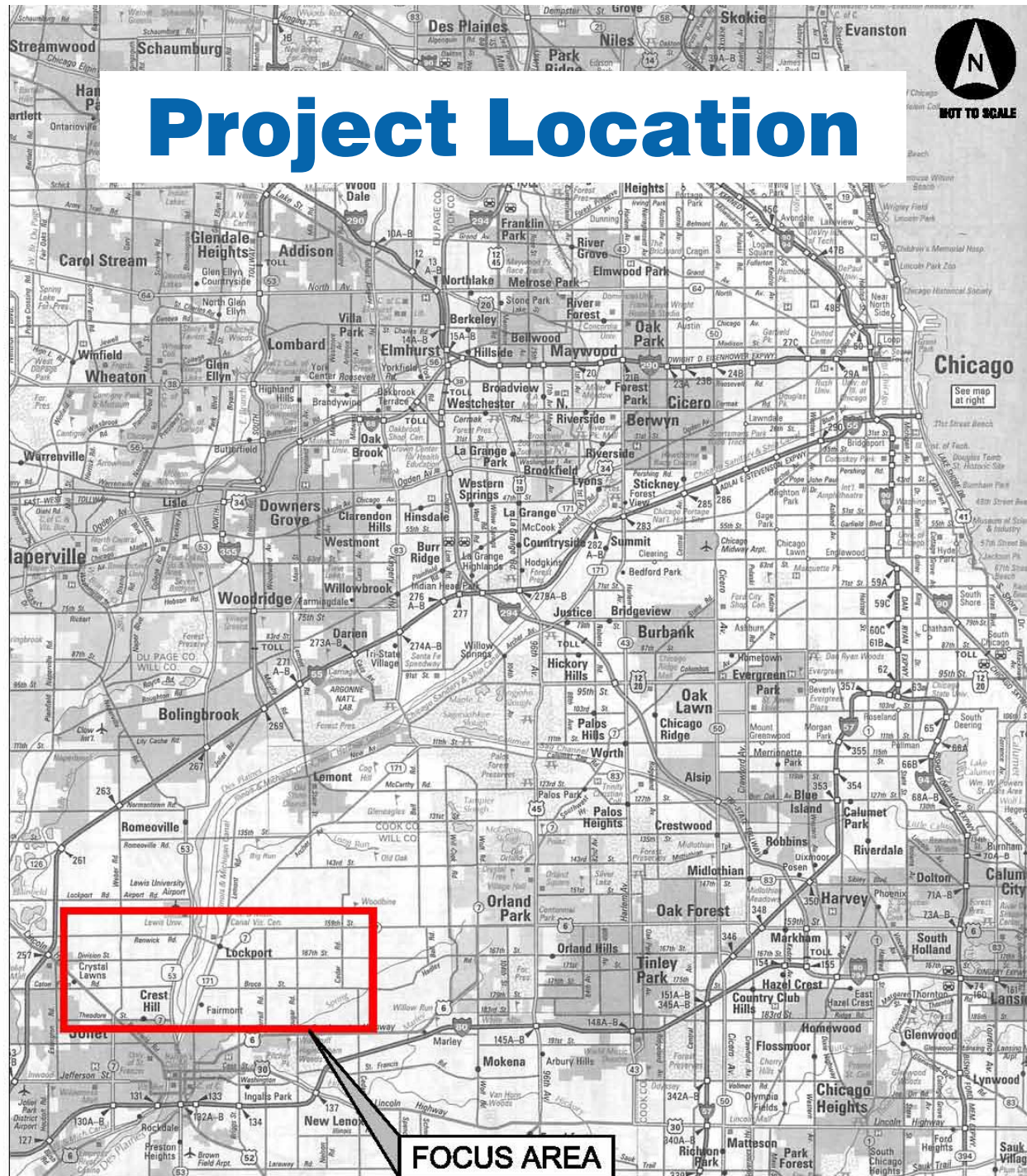


Caton Farm - Bruce Road  
Phase I Study



September 6, 2012

# Project Location



# Project Purpose

**The purpose of the Proposed Action is to provide a transportation system improvement that will address capacity, operational, and safety deficiencies; and satisfy projected 2040 travel demands within a regional corridor extending between Caton Farm Road at U.S. Route 30 and IL Route 7 (159th Street) at Cedar Road.**

**Concurrence Point #1 – March 1, 2005**

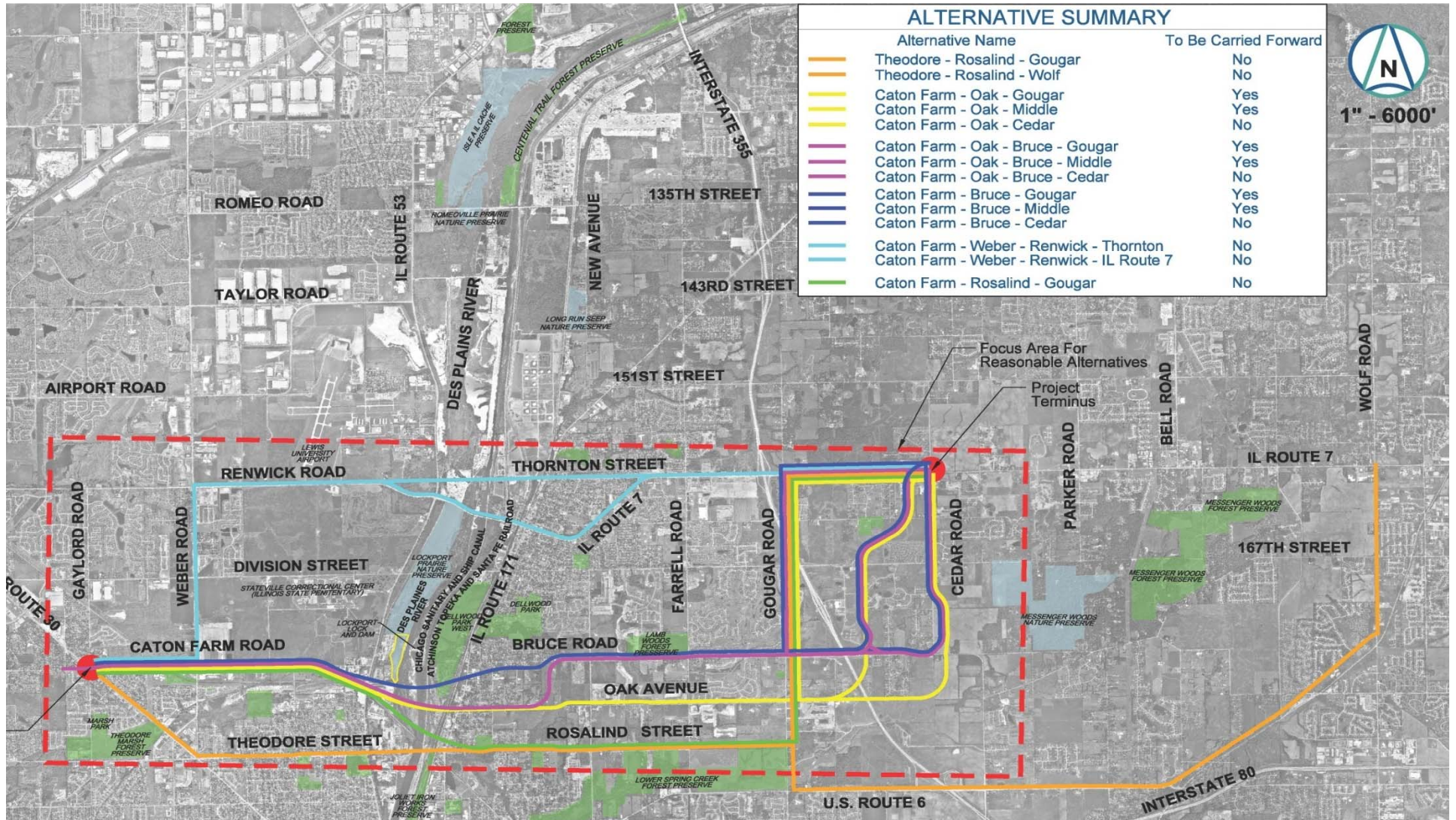
**Selected Alternative**

**September 6, 2012**



Caton Farm - Bruce Road ■ Phase I Study

# Build Alternatives



# Alternatives Carried Forward

- **Caton Farm - Oak - Gougar Alternative**
- **Caton Farm - Oak - Middle Alternative**
  
- **Caton Farm - Oak - Bruce - Gougar Alternative**
- **Caton Farm - Oak - Bruce - Middle Alternative**
  
- **Caton Farm - Bruce - Gougar Alternative**
- **Caton Farm - Bruce - Middle Alternative**

**Concurrence Point #2 – January 9, 2007**

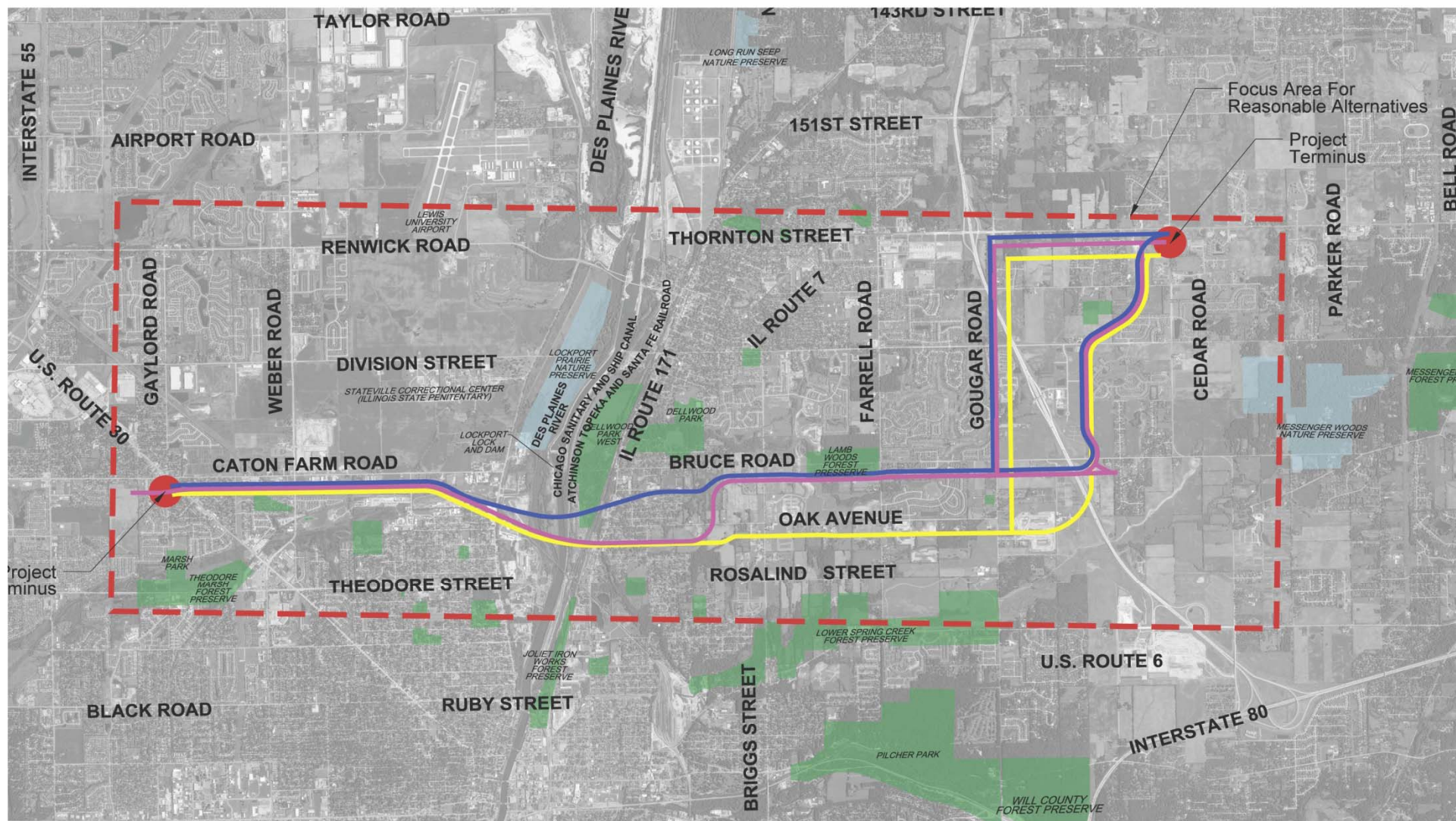
**Selected Alternative**

**September 6, 2012**

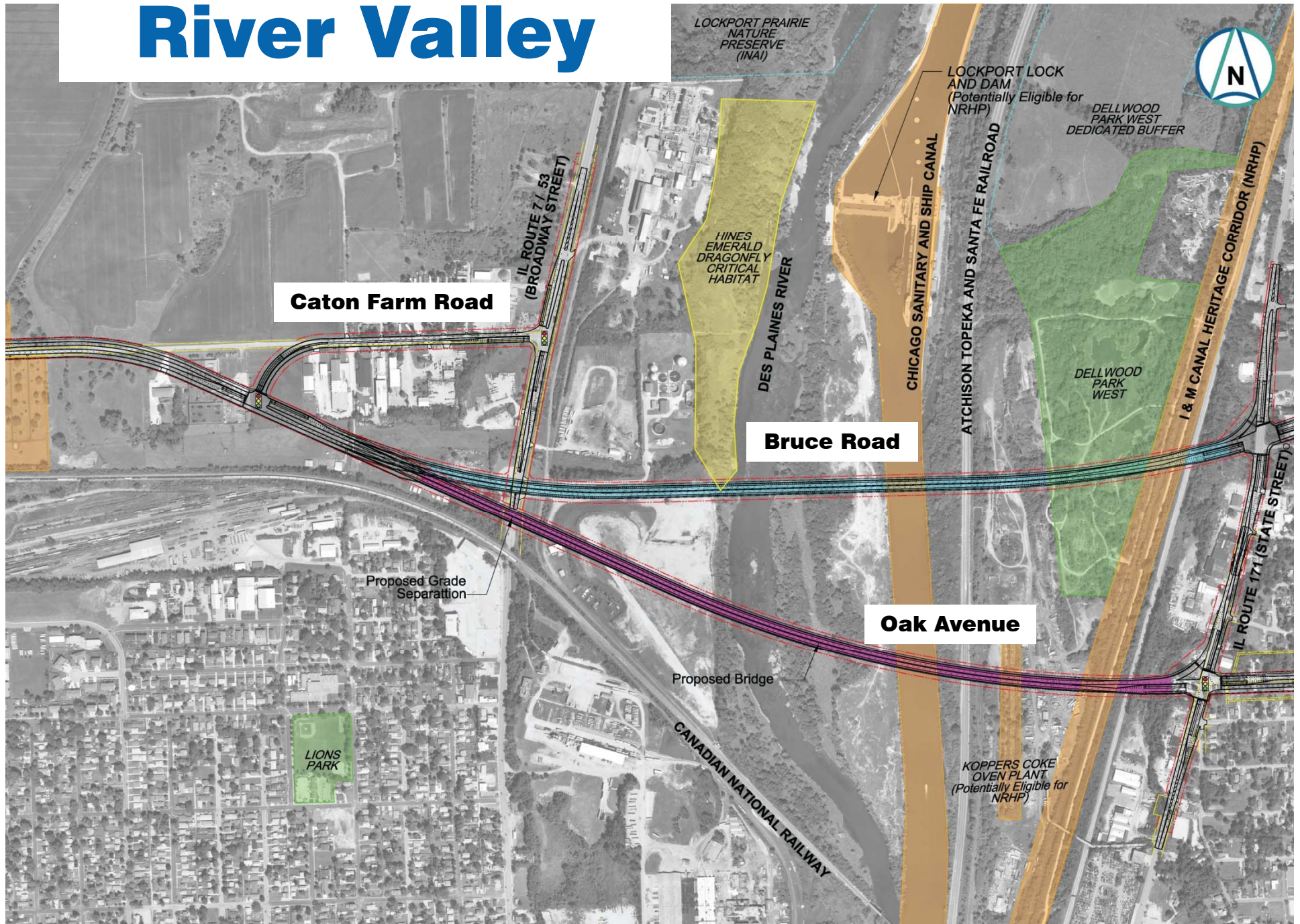


Caton Farm - Bruce Road ■ Phase I Study

# Alternatives Carried Forward



# River Valley



# Impact Comparison

Impact	Alternatives to be Carried Forward						
	No-Action	Caton Farm Oak Gougar	Caton Farm Oak Middle	Caton Farm Oak Bruce Gougar	Caton Farm Oak Bruce Middle	Caton Farm Bruce Gougar	Caton Farm Bruce Middle
Potential Wetland Encroachment (acres)	0	3	3	4	2	3	2
Potential Floodplain Encroachment (acres)	0	4	8	11	17	10	17
Potential Section 4(f) Encroachment (acres)	0	0.8	0	1.3	0.5	4.6	3.8
Potential Historic Feature Impacts	0	8	4	8	4	7	3
Potential Special Waste Sites Impacts	0	50	52	51	53	36	37
Potential Environmental Justice Concerns	No	Yes	Yes	Yes	Yes	Yes	Yes
Impact to HED Critical Habitat	No	No	No	No	No	Yes	Yes
Potential for HED Impacts	No	Yes	Yes	Yes	Yes	Yes	Yes
Displacements	0	43	45	46	48	28	29
ROW Acquisition (acres)	0	106	150	115	162	113	160

**Selected Alternative**

**September 6, 2012**



Caton Farm - Bruce Road ■ Phase I Study

# Impact Comparison

## ***Caton Farm – Bruce Corridor***

- **Impacts HED Critical Habitat**
- **Impacts ~4.5 acres of Dellwood Park West**

***Recommend both Caton Farm-Bruce Corridor alternatives be dropped.***

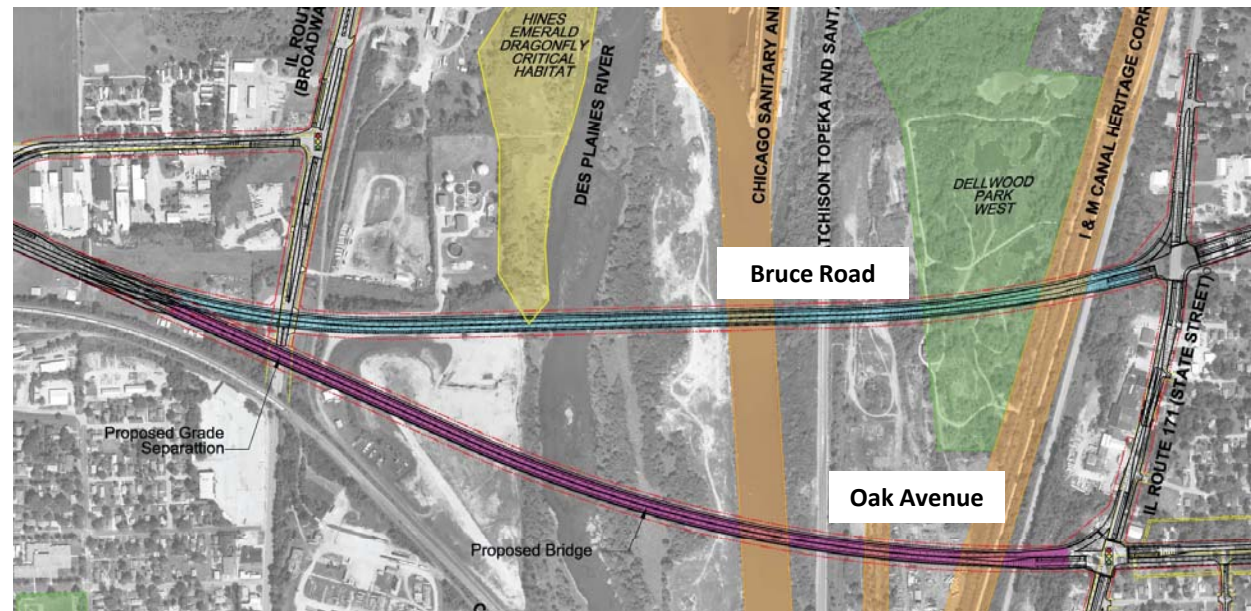
# Impact Comparison

- **Remaining alternatives have comparable quantitative impacts.**
- **Qualitative differences have lead to the selection of a Preferred Alternative.**

# Impact Comparison

## *Oak vs. Oak-Bruce*

**Necessary  
to use a  
portion of  
Oak Avenue  
to avoid  
HED Critical  
Habitat**



**Selected Alternative**

**September 6, 2012**



Caton Farm - Bruce Road ■ Phase I Study

# Impact Comparison

## *Oak vs. Oak-Bruce*



**Selected Alternative**

**September 6, 2012**



Caton Farm - Bruce Road  Phase I Study

# Impact Comparison

## *Oak vs. Oak-Bruce*

- **Oak Avenue classified as a “Local” street.**
- **Bruce Road is classified as a “Collector” west of Gougar and “Arterial” east of Gougar.**
- **Development along each route has been consistent with functional classification.**

# Impact Comparison

## *Oak vs. Oak-Bruce*

- **Based on functional classification it is desirable to transition from Oak to Bruce.**

***Recommend both Caton Farm-Oak Corridor alternatives be dropped.***

# Impact Comparison

## ***Caton Farm-Oak-Bruce Corridor Gougar vs. Middle***

- **Predicted future east-west travel is substantial.**
- **Accommodating this growth on Gougar will impact existing land uses not compatible with major arterial.**
- **“Double-linking” east-west traffic onto a north-south roadway is operationally undesirable.**

**Selected Alternative**

**September 6, 2012**



Caton Farm - Bruce Road ■ Phase I Study

# Impact Comparison

## *Caton Farm-Oak-Bruce Corridor Gougar vs. Middle*

- **Middle alignment is a rare opportunity to plan future land uses compatible with an arterial highway.**

# **Selection of Preferred Alternative**

## ***Caton Farm-Oak-Bruce-Middle***

- **May 2009 - Transportation Corridor Committee Consensus**
- **July 2009 - County Board Resolution**

**Selected Alternative**

**September 6, 2012**



Caton Farm - Bruce Road ■ Phase I Study

# Next Steps

- **Section 7 Consultation – Biological Assessment**
- **Draft Environmental Assessment**
- **Public Hearing**

# Discussion

**Selected Alternative**

**September 6, 2012**



Caton Farm - Bruce Road ■ Phase I Study